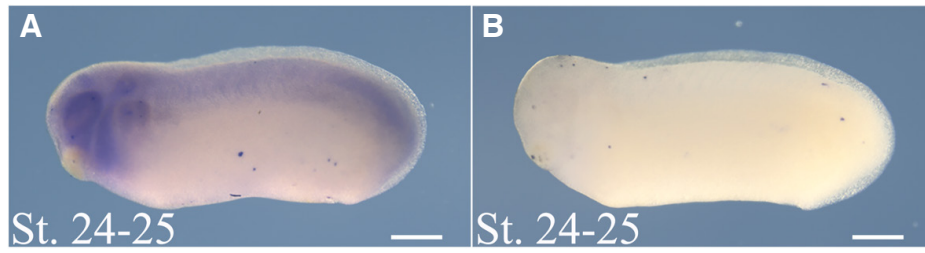


# Supplementary Material

corresponding to:

## **Expression analysis of *thg1l* during *Xenopus laevis* development**

DAVIDE MARTINI, CHIARA DE CESARI, MATTEO DIGREGORIO, ALESSIA MUSCÒ,  
GUIDO GIUDETTI#, MARTINA GIANNACCINI, MASSIMILIANO ANDREAZZOLI



**Supplementary Figure S1. Evaluation of *thg1l* probes.** Lateral views, anterior to the left. Embryo developmental stages (St.) are indicated at the bottom left of each panel. Representative images of whole-mount *in situ* hybridizations performed using (A) *thg1l* antisense probe and (B) *thg1l* sense control probe to assess hybridization signal strength and specificity. Scale bars: 500  $\mu$ m.