

doi: 10.1387/ijdb.150409th

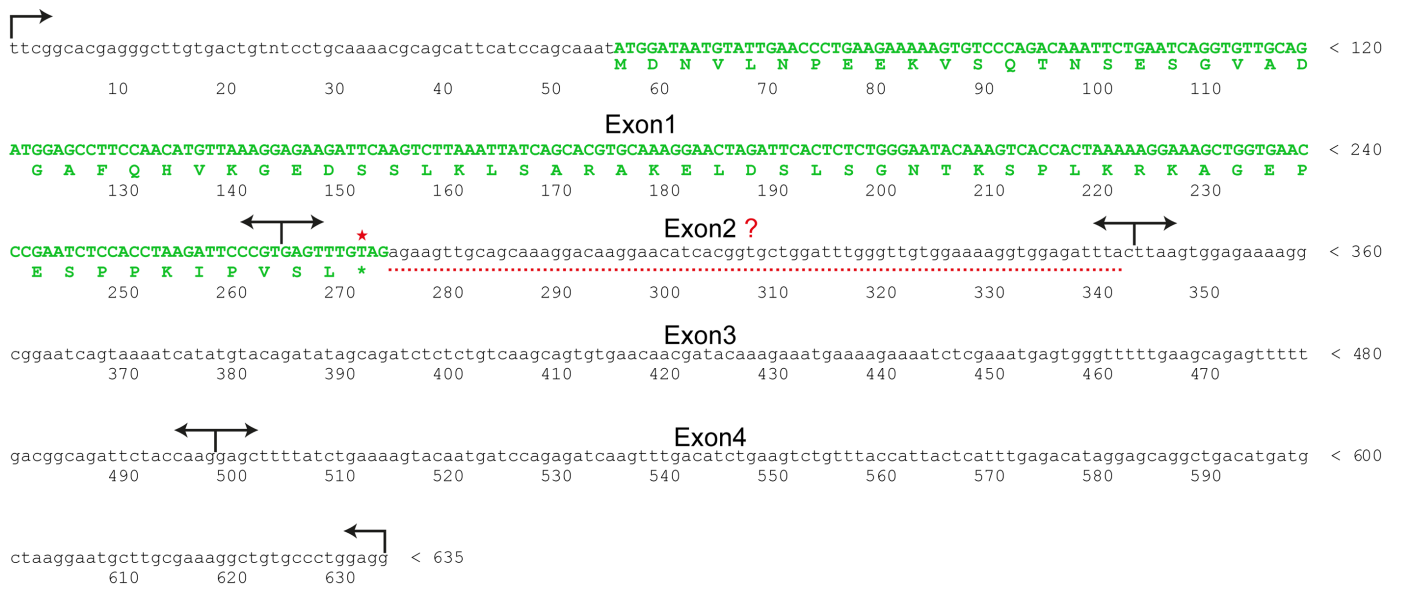
**SUPPLEMENTARY MATERIAL**

**corresponding to:**

**Expressional characterization of mRNA (guanine-7)  
methyltransferase (*rnmt*) during early development  
of *Xenopus laevis***

ASHWIN LOKAPALLY, SANJEEVA METIKALA and THOMAS HOLLEMANN\*

\***Address correspondence to:** Thomas Hollemann. Martin-Luther-University Halle-Wittenberg, Institute for Physiological Chemistry, Halle (Saale), Germany.  
e-mail: thomas.hollemann@medizin.uni-halle.de



**Supplementary Fig. S1. *Xenopus laevis* cDNA: EST clone BJ062466.** cDNA sequence from an EST clone in *X. laevis* genome. The sequence in green represents the ORF, red star the premature stop codon at the beginning of exon 2 while the arrows in both directions i.e. forward and reverse represent the splicing regions in the 5' and 3' direction.