

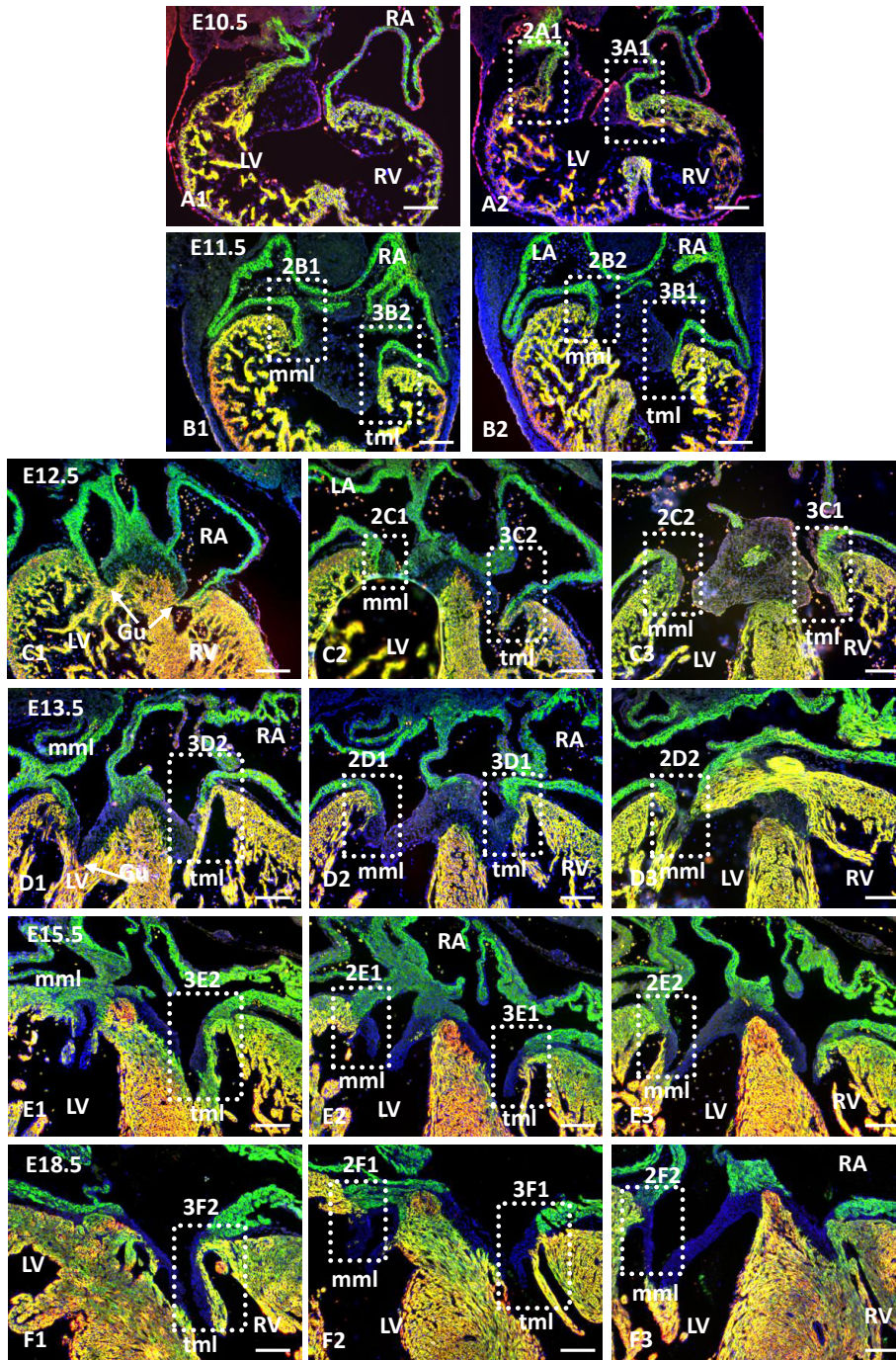
**SUPPLEMENTARY MATERIAL**

**corresponding to:**

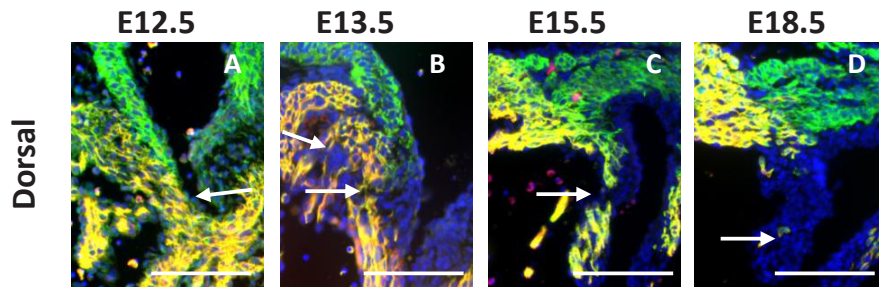
**Early myocardial trabeculation and differential remodeling of  
the left and right atrioventricular myocardium; implications  
for cardiac valve formation and a role for TGFbeta2**

BOUDEWIJN P.T. KRUIHOF, MARIANNA KRUIHOF-DE JULIO, ROBERT E. POELMANN,  
ADRIANA C. GITTEBERGER-DE GROOT, VINCIANE GAUSSIN and MARIE-JOSÉ GOUMANS

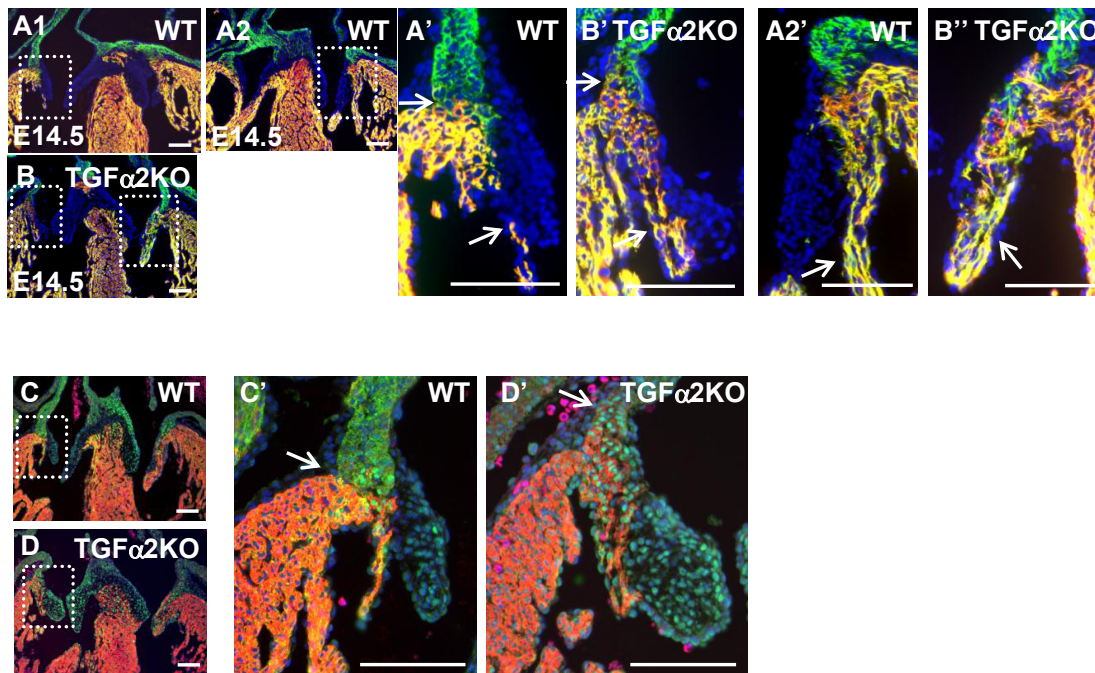
Dorsal      Overview      →      Ventral



Supplementary Fig. 1. Overview pictures depicting the exact or similar location of pictures of Fig. 2. Scalebar, 100  $\mu$ m.



**Supplementary Fig. 2. Removal of valvular myocardium.** (A-D) Mitral mural leaflet formation at a relative dorsal side of the heart displaying the gap in the valvular myocardium at E13.5 (B) and E15.5 (C) and the single myocardial cells found at E18.5 (D). Scalebar, 100  $\mu$ m.



**Supplementary Fig. 3. Myocardial remodeling defects in TGF $\beta$ 2-deficient mice.** (A,B) MF20 (red) and cTnl (green) staining and (C,D) Tbx3 (green) and MF20 (red) staining show that the MF20+ (orange/yellow) staining extends too far in the left AV myocardium and a too thick valvular myocardium is present in TGF $\beta$ 2-deficient mouse. Scalebar: 100  $\mu$ m.