

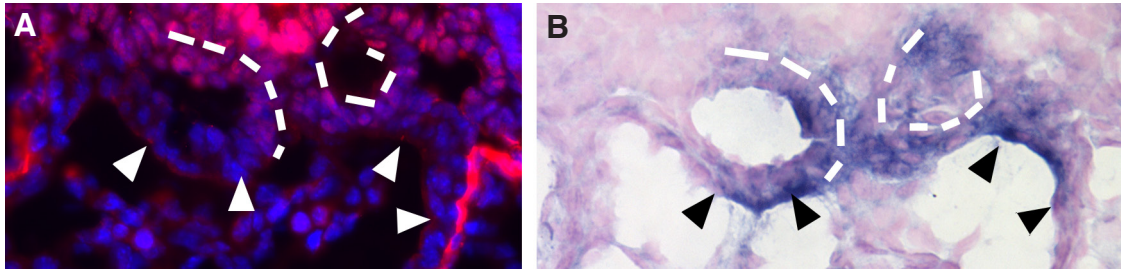
doi: 10.1387/ijdb.130072jd

**SUPPLEMENTARY MATERIAL**

**corresponding to:**

**Analysis of *Cripto* expression  
during mouse cardiac myocyte differentiation**

JIU-ZHEN JIN, MIN TAN and JIXIANG DING



**Supplementary Fig. 1.** Immunostaining and in situ hybridization in adjacent sections revealed that Cripto mRNA expression domain is partially overlapped with Isl1 protein expression domain in the dorsal region of heart tube around E7.75-E8.0. **(A)** Immunostaining using Isl1 antibody showing Isl1 protein expression (red) and DAPI staining (blue). **(B)** An adjacent section of (A) that was hybridized with Cripto probe showing the expression of Cripto mRNA. The dashed lines indicate the dorsal regions of the heart tube that are positive for both Cripto mRNA expression and Isl1 protein expression, and the arrowheads indicate the regions in the heart tube that are positive for Cripto mRNA expression (black arrowheads in B), but negative for Isl1 protein expression (white arrowheads in A). Anti-Isl1 antibody was from Developmental Studies Hybridoma Bank (1:20 dilution) and Cy3 conjugated goat anti-mouse IgG secondary antibody was from Molecular Probe (1:1000 dilution).