

**SUPPLEMENTARY MATERIAL**

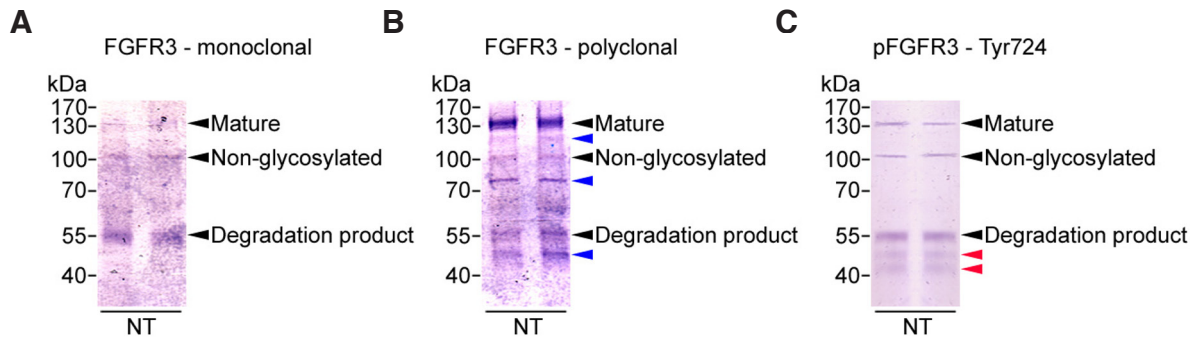
**corresponding to:**

**Expression of FGFR3 during human testis development  
and in germ cell-derived tumours of young adults**

KATHERINE A. EWEN, INGE A. OLESEN, SOFIA B. WINGE, ANA R. NIELSEN,  
JOHN E. NIELSEN, NIELS GRAEM, ANDERS JUUL and EWA RAJPERT-DE MEYTS

**\*Address correspondence to:** Ewa Rajpert-De Meyts, Rigshospitalet, Section GR-5064, Blegdamsvej 9, DK-2100 Copenhagen, Denmark.  
Tel: +45-3545-5017. Fax: +45-3545-6054. E-mail: erm@rh.dk

**Full text** corresponding to this paper is available at: <http://dx.doi.org/10.1387/ijdb.130022er>



**Supplementary Fig. S1. Western blots show FGFR3 and phosphorylated (p)FGFR3 proteins in extracts of normal adult testis (NT).** *Western blots also show the specificity of the FGFR3 monoclonal (A), FGFR3 polyclonal (B) and pFGFR3 Tyr 724 (C) antibodies. Black arrowheads indicate proteins detected by the monoclonal FGFR3 antibody; blue arrowheads indicate additional proteins detected by the polyclonal FGFR3 antibody; red arrowheads indicate additional proteins detected by the pFGFR3 antibody.*