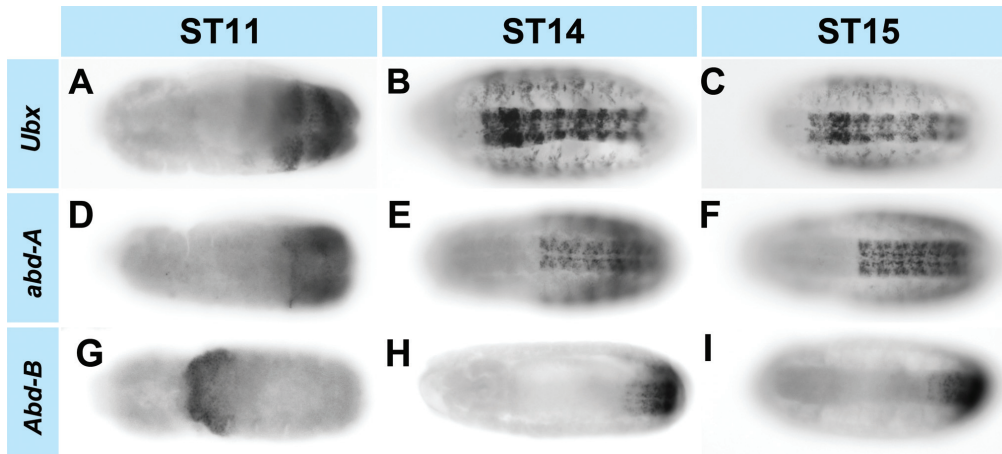


SUPPLEMENTARY MATERIAL

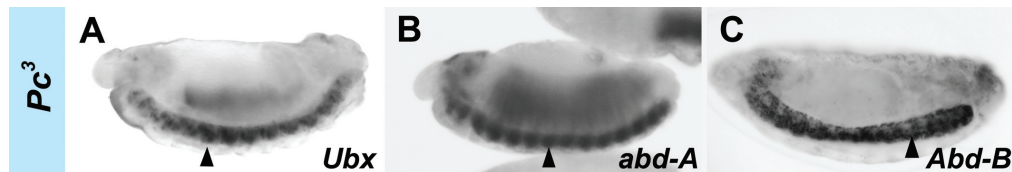
corresponding to:

***Drosophila castor* is regulated negatively by the *Ubx* and *abdA* genes, but positively by the *AbdB* gene**

JU-HYUN AHN, SIUK YOO, HYUN-JOO PARK, KEUK-IL JUNG, SANG-HEE KIM and SANG-HAK JEON*



Supplementary Fig. 1. Expression of *Ubx*, *abdA* and *AbdB* in wild type embryos. Three genes begins to appear from the epidermis and are then strongly expressed in the CNS. **(A-C)** *Ubx* expression. *Ubx* is expressed in PS5 to 12 in epidermis. It shows the strongest expression in PS6 at stage 14 and 15. **(D-F)** *abdA* expression. *abdA* is expressed from PS7 to 13. **(G-I)** *AbdB* expression. *AbdB* is expressed from PS10 to 14.



Supplementary Fig. 2. Ectopic expression of *Ubx*, *abdA* and *AbdB* genes in *Pc* mutant embryos. All three genes are ectopically expressed in the head, thoracic and abdominal segments. Arrow heads indicates the anterior boundary of *Ubx* **(A)**, *abdA* **(B)** *AbdB* **(C)** in wild type embryos, respectively.

SUPPLEMENTARY TABLE 1

PRIMER SEQUENCES USED IN QUANTITATIVE REAL-TIME PCR

Primer	Sequence (5'→3')
<i>Ubx</i> -F	CTATGCCAACCACCATCTGC
<i>Ubx</i> -R	TCTTTGTAGCCATTACCCGC
<i>abdA</i> -F	ATCGCTGGAAGCAACACAAG
<i>abdA</i> -R	CCAGATGTTGGCTCAAATGG
<i>AbdB</i> -F	TAGCGCCACTGCATATACCC
<i>AbdB</i> -R	GTCCGTTGTAGGCCAGTGTG
<i>cas</i> -F	CGCCAAAAATCGCAGATCCCT
<i>cas</i> -R	CAGATGGTGGTGGTTGGCATA
<i>Actin5C</i> -F	CCAGAGACACCAAACCGAAAG
<i>Actin5C</i> -R	TCGACAACCAGAGCAGCAACT

Primers were selected over intron-exon boundaries to avoid genomic DNA amplification. F and R represent forward and reverse primer, respectively.