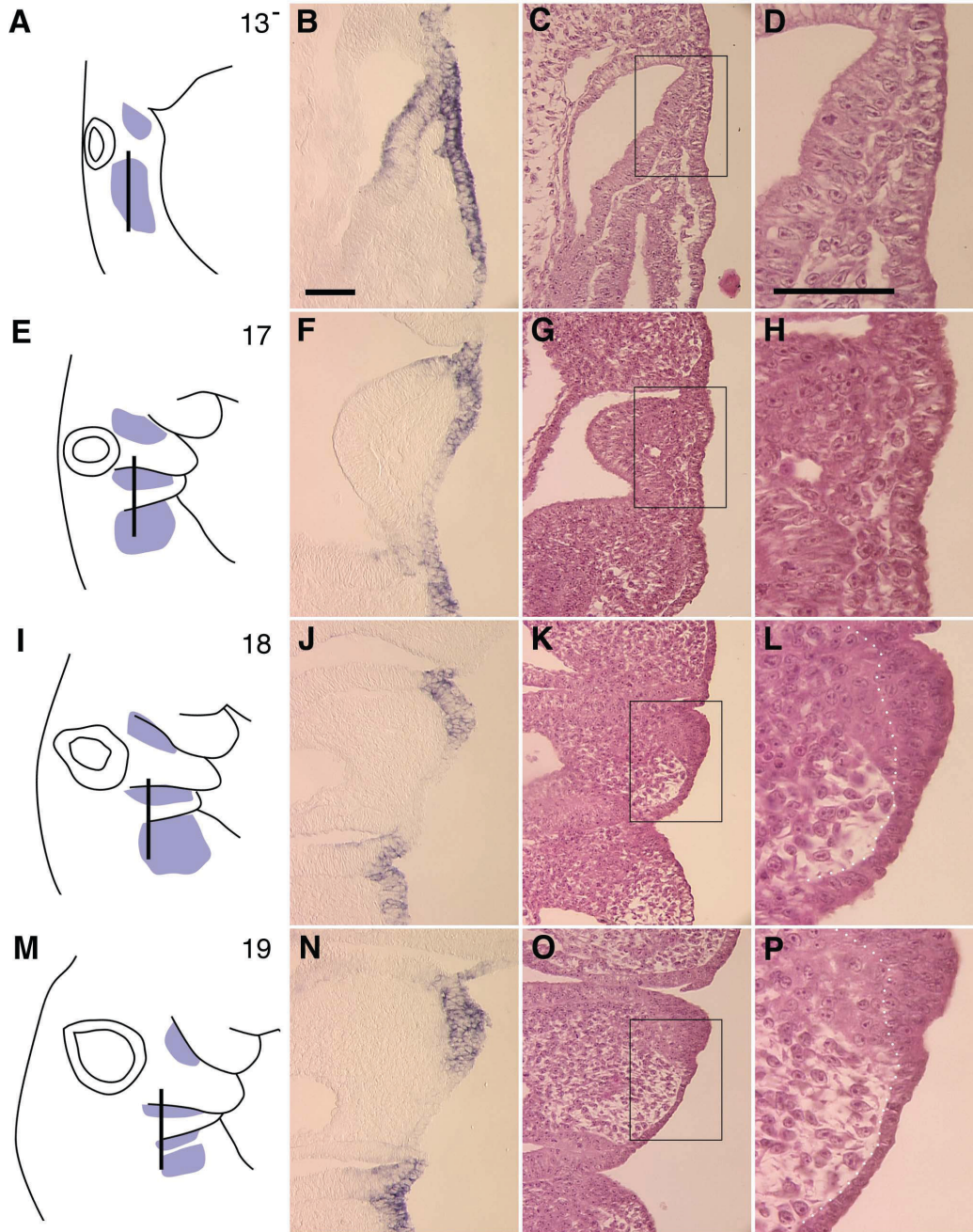


**SUPPLEMENTARY MATERIAL**

**corresponding to:**

**The surface ectoderm of the chick embryo exhibits  
dynamic variation in its response to neurogenic signals**

VINEETA BHASKER TRIPATHI, YASUO ISHII, MUHAMMAD M. ABU-ELMAGD  
and PAUL J. SCOTTING



**Suppl. Fig. 1. Longitudinal sections through the embryo at stage 13- (A-D), 17 (E-H), 18 (I-L) and 19 (M-P) showing gradual changes in epithelial morphology and thickness.** Levels of sections are shown in A, E, I and M. (B, F, J, N) Sections following whole mount in situ hybridization for Sox3. (C, G, K, O) Corresponding histological sections stained by hematoxylin and eosin. (D, H, L, P) Boxed region in (C, G, K, O). Scale bar, 100  $\mu$ m. Note the correspondence between Sox3 expression and thickened morphology.