

Plasticity of human adipose-derived stem cells – relevance to tissue repair

LEONARDO GUASTI¹, SOPHIE E. NEW², IRENE HADJIDEMETRIOU^{1,2}, MIRIAM PALMIERO²
and PATRIZIA FERRETTI²

¹Centre for Endocrinology, William Harvey Research Institute, Barts and the London, Queen Mary University of London and ²Stem Cell and Regenerative Medicine Section, Developmental Biology and Cancer Programme, UCL Great Ormond Street Institute of Child Health, University College London, London, UK.

ABSTRACT In contrast to cold blooded vertebrates, the ability to regenerate morphologically and functionally complex structures is limited in adult mammals. Recruitment of progenitor cells is a key step in the regenerative process. The possibility of repairing missing or diseased tissues in humans has been potentiated by the increasing understanding of somatic stem cells, their plasticity and the possibility of modulating it, that could be harnessed either to stimulate endogenous repair or to engineer the required tissue. Here, we focus on human mesenchymal stem cells (MSCs), important players in tissue homeostasis in healthy organisms, with a particular emphasis on those derived from the adipose tissue (ADSCs). While a mark of MSC identity is the ability to differentiate into osteoblasts, chondrocytes and adipocytes, there is evidence that their potential goes beyond these three mesenchymal lineages. We discuss some differentiation and modulatory properties of MSCs and provide an overview of our recent work on ADSCs from paediatric patients (pADSCs) that has shown their ability to give rise to non-mesenchymal cells, consistent with a significant plasticity. Finally, we present novel data indicating that both mesenchymal lineages (adipogenic, chondrogenic and osteogenic) and neural and epithelial lineages can originate from clonal lines that like the parental line express markers of pluripotency as well as the stromal cell marker, GREM1. Together these data support the existence of pADSC multipotent stem cells.

KEY WORDS: *adipose tissue-derived stem cell (ADSC), human, mesenchymal stem cell (MSC), plasticity, regeneration*


Introduction

The possibility of regenerating entire organs has fascinated humankind for centuries given the limited regenerative ability in humans in contrast to extraordinary regenerative capabilities observed in certain species where entire body structures can be fully replaced. For example, cold blooded vertebrates, such as fish and amphibians, can regenerate limbs, jaws, tails, heart, and even their nervous system, spontaneously (Berg *et al.*, 2010, Ferretti and Géraudie, 1998, Goss, 1969, Slack, 2017, Spallanzani, 1768, Stocum, 2006, Tzahor and Poss, 2017). Regeneration occurs via formation of a mound of undifferentiated progenitor cells, the blastema, in response to injury. The mechanisms underlying mobilization of these cells, their origin and differentiation potential has been a matter of much debate for several decades, and obviously

depends on the tissue/organ to be replaced and the species studied (Godwin, 2014, Zielins *et al.*, 2016).

Recruitment of progenitor cells is a key step in the regenerative process and the ability to stimulate it in mammals represents a potential strategy for inducing regeneration in humans, as exemplified by studies on mammalian digit tip regeneration (Agrawal *et al.*, 2010, Simkin *et al.*, 2015). Furthermore, a crucial role of inflammatory responses in stimulating regeneration in several species has emerged over the last few years, with a key role for inflammatory cells demonstrated following digit tip amputation and regeneration of the skin in the African spiny mouse (Godwin, 2014, Simkin *et al.*, 2017). Another approach to circumvent the limited regenerative

Abbreviations used in this paper: ADSC, adipose-derived stem cell; MSC, mesenchymal stem cell; WAT: white adipose tissue.

*Address correspondence to: Patrizia Ferretti. Stem Cell and Regenerative Medicine Section, UCL Great Ormond Street Institute of Child Health, 30 Guilford Street, London WC1N 1EH, UK. Tel: (+44) 020-7905 2372. Fax: (+44) 020 7905 2953. E-mail: p.ferretti@ucl.ac.uk -  <https://orcid.org/0000-0002-3590-6772>

Supplementary Material (one table) for this paper is available at: <http://dx.doi.org/10.1387/ijdb.180074pf>

Submitted: 22 January, 2018; Accepted: 23 February, 2018.

ability in mammals is the use of autologous or allogeneic cells to engineer tissue for reconstructing structures damaged by injury, disease or birth defects. Whichever approach one might wish to take to improve repair of human tissues, a thorough understanding of developmental mechanisms leading to formation of the structure of interest *in vivo* and of the potential for repair of human progenitor cells, both pre- and post-natally, is crucial. Investigation of mechanisms governing development, cellular plasticity, and normal and abnormal function of human tissues is hampered by the very limited possibility of experimental manipulations of human tissues *in vivo*. Hence, most of our understanding of cellular and molecular mechanisms governing human development and repair is either extrapolated from animal studies, that do not always reflect human cell behavior or disease presentation, or *in vitro* systems.

Among human tissues with very limited regenerative capability are the bone and cartilages of the craniofacial skeleton. In fact, while skeletal fracture healing is a fairly efficient process, in humans critical size skeletal defects are not spontaneously repaired. This is in contrast to salamander and fish ability to fully regenerate their jaws, in addition to their appendicular skeleton, upon recruitment of mesenchymal progenitor cells to form the blastema (Ghosh *et al.*, 1996, Paul *et al.*, 2016). Here mesenchymal cells are key players in the regenerative process, but humans do not seem able to effectively activate them to repair large skeletal defects.

Consequently, widely investigated cell types for developing novel treatment modalities for craniofacial defects in humans are Mesenchymal Stem Cells (MSCs). Since the discovery of MSCs in the human bone marrow in 1968 (Friedenstein *et al.*, 1968) there has been an ever-increasing interest in these cells. MSCs are known to be important for tissue homeostasis, but cannot regenerate missing bone or cartilage in humans. Therefore, much focus has been on their potential use in cell-based therapies for repairing damaged tissue, which has resulted in hundreds of current and planned clinical trials (Squillaro *et al.*, 2016). The interest in using MSCs to repair these tissues has obviously generated a huge number of papers on their characterization, and raised a number of questions about the specific identity and properties of MSCs from different tissues and their plasticity.

In depth discussion of the huge wealth of studies and of differ-

ences between human MSCs from different tissues is beyond the purpose of this article. Here we will briefly discuss some properties and origin of MSCs with a particular focus on those derived from adipose tissue (ADSCs), and provide an overview of our recent published work on ADSCs from paediatric patients (pADSCs) in the context of current knowledge. We will also discuss novel data supporting pADSC plasticity and their ability to give rise to non-mesenchymal cells.

Mesenchymal stem cell (MSC) properties and origin

MSCs are multipotent stem cells with high capacity for self-renewal and expansion; they are endowed with differentiation potential to various lines, including, but as we will discuss later not limited to, osteoblasts, chondrocytes, and adipocytes. They can be found virtually in all tissues and are believed to reside mainly within the perivascular niche.

MSCs are routinely isolated as the so-called “stromal fraction” from the vast majority of human tissues (Fig. 1), both adult and paediatric, as well as from extra-embryonic tissues (umbilical cord, placenta and amniotic fluid) (Stubbendorff *et al.*, 2013).

Post-natally, common sources of MSCs are the bone marrow, adipose tissue and dental pulp. MSCs have been characterized extensively after culture *in vitro*; however, this procedure selects cells on their ability to adhere to plastic surfaces or other substrates, as well as to expand after adhesion; therefore the resulting cell population may display some different features from the native stromal fraction it was derived from. A set of cell surface markers is used to characterize MSCs, usually by flow cytometry; although some of these markers, as exemplified in Table 1, are common to MSCs derived from diverse sources, differences in the expression of others have been described. These differences reflect features of the tissue of origin and culture conditions (Hass *et al.*, 2011, New *et al.*, 2015). Furthermore expression of “MSC” surface markers seems to be shared also by other somatic stem cells, calling for caution on classifying cells as MSC only on the basis of these markers (New *et al.*, 2015).

Somatic stem cells had not been classically considered to be highly plastic, but the plasticity of human MSCs is now well

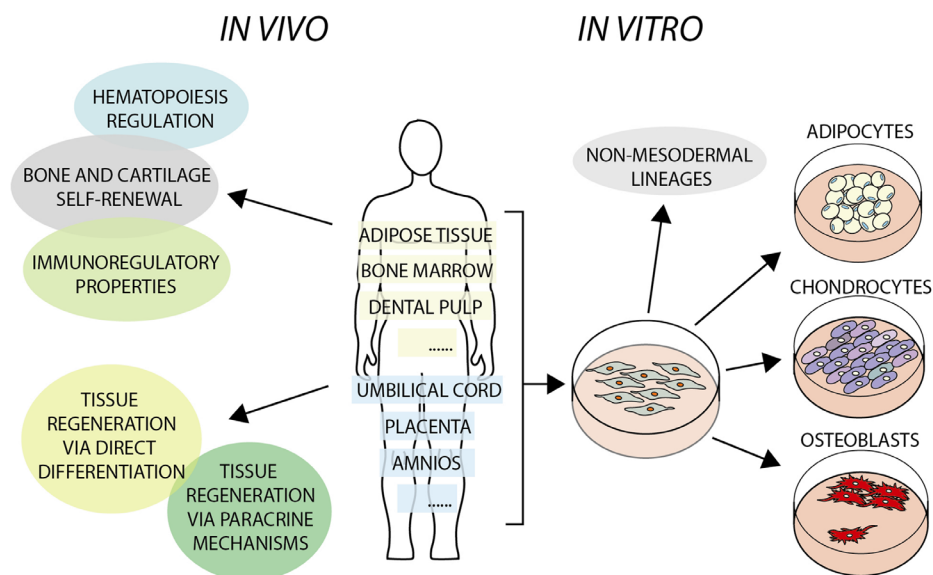


Fig. 1. *In vivo* and *in vitro* characteristics of mesenchymal stem cells (MSCs). MSCs can be isolated from tissues of both adults and children, as well as from extra-embryonic tissues. They have been extensively studied for their *in vitro* ability to differentiate towards mesodermal lineages (adipocytes, chondrocytes and osteocytes), and specific protocols to generate cells of non-mesodermal lineages have been developed. *In vivo*, MSCs' most studied properties regard hematopoiesis regulation, the self-renewal of bone and cartilage and their potent immunoregulatory properties. The versatility typical of MSCs is being investigated for tissue regeneration purposes, either via their direct differentiation towards tissues to be engineered or by taking advantage of the actions of their secretome.

TABLE 1

COMPARATIVE ANALYSIS OF SURFACE MARKERS OF HUMAN UC-MSC, p-ADSC AND NSCs, BY FLOW CYTOMETRY

		UC-MSC	p-ADSC	NSC
Mesenchymal markers	CD13	97.48 ± 1.4	97.43 ± 2.16	82.07 ± 9.53*
	CD29	99.28 ± 0.51	98.70 ± 1.15	99.90 ± 0.10
	CD44	98.98 ± 0.80	99.87 ± 0.03	99.83 ± 0.06
	CD73	98.28 ± 1.01	99.17 ± 0.68	99.47 ± 0.33
	CD90	98.95 ± 0.85	99.07 ± 0.23	67.13 ± 24.65
	CD105	99.00	92.43 ± 6.18	57.20
	CD166	97.00 ± 1.55	92.30 ± 6.45	99.50 ± 0.15

UC-MSC umbilical cord mesenchymal stem cell; pADSC, paediatric adipose-tissue derived stem cell; NSC, neural stem cell (modified from New *et al.*, 2015).

documented, though much variation between studies is noted; this is likely due to differences in experimental conditions, individual donors genetic background, or a combination of the two (Hass *et al.*, 2011, Ullah *et al.*, 2015). While a general definition of MSCs is based on their 3 mesenchymal lineage differentiation potential (cartilage, bone and adipose), it has been proposed that they harbor also myogenic capability (Rodriguez *et al.*, 2006, Stern-Straeter *et al.*, 2014, Szaraz *et al.*, 2017). In addition, cells of non-mesodermal lineages, such as hepatocytes, endothelial, epithelial, pancreatic and neural cells have also been derived from MSCs using specific cocktails of cytokines and chemical compounds (Bekhite *et al.*, 2014, New *et al.*, 2017, Ullah *et al.*, 2015). Furthermore, MSCs have been reprogrammed to Inducible Pluripotent Stem Cells (iPSCs) using pluripotency transcription factors, or reprogrammed to directly generate specific tissue types through forced expression of lineage-specific transcription factors (Hynes *et al.*, 2016). Overall, MSCs from different sources seems to share the property of being more easily reprogrammed than mature somatic cells, such as fibroblast and blood cells; this appears to correlate with expression, though at low levels, of pluripotency transcription factors (Galende *et al.*, 2010, Guasti *et al.*, 2012, Streckfuss-Bomeke *et al.*, 2013, Sun *et al.*, 2009).

Despite the comprehensive characterization of MSCs properties *in vitro*, much less is known regarding their exact location in the tissues of origin and their precise role in the regulation of tissue homeostasis. A better understanding of these two aspects would certainly facilitate the exploitation of their translational potential. Several recent independent studies have shown that cells with MSCs properties can be localized in and isolated from perivascular locations in the tissues of origin (Murray and Peault, 2015); however, MSCs not associated with the vasculature have been identified in certain structures, such as cranial sutures (Zhao *et al.*, 2015). The MSCs associated with the vasculature, the so called Perivascular Stem Cells (PSCs), are seemingly pericytes and adventitial cells, and appear to contribute to local tissue repair upon activation in

response to injury (Crisan *et al.*, 2008, da Silva Meirelles *et al.*, 2015). PSCs, like all MSCs studied, display an important property, which is immunomodulation; in fact they have been shown to secrete discreet set of cytokines as well as activate T suppressor lymphocytes, resulting in a complex immunosurveillance during the repair process (Blanco *et al.*, 2016, Gebler *et al.*, 2012, Melief *et al.*, 2013). This potent immunomodulatory role is indeed being harnessed in clinical trials aimed, for example, at ameliorating graft versus host disease, improving allogenic stem cell transplants or function in diseased liver and kidney (Gao *et al.*, 2016, Squillaro *et al.*, 2016). However, evidence for a significant role of grafted cells in tissue regeneration has yet to be provided.

As it has become more and more apparent that beneficial effects of MSCs are mediated via paracrine mechanisms, there has been much interest in defining the secretome of these cells as well as identifying approaches to activating/mobilizing them in the hope of developing cell-free therapies and harness any endogenous regenerative potential (Embree *et al.*, 2016, Mele *et al.*, 2016, Miller and Kaplan, 2012). The initial focus has been on growth factors and cytokines, but a cocktail of MSC-secreted growth factors and cytokine that mimic closely the effect of injected MSCs has yet to be defined (Toh *et al.*, 2017). More recently, the therapeutic potential of MSC-derived exosomes has come to the forefront. Exosomes are 30-150 nm secreted vesicles that carry proteins, nucleic acids (e.g. microRNAs) and lipids and are now believed to play key functions in cell-cell communications both at short and long range (Thomou *et al.*, 2017). Recent studies reporting beneficial effect of adipose stem cell exosomes in a range of animal disease models, including skin wound healing, revascularization, amyotrophic lateral sclerosis and myocardial ischemia, are galvanizing interest in exploiting their properties to develop novel therapeutic approaches (Cui *et al.*, 2017, Hu *et al.*, 2016, Kang *et al.*, 2016, Lee *et al.*, 2016). Furthermore, the ability of MSC to exchange materials at a shorter range via tunnelling nanotubes has also been suggested (Vignais *et al.*, 2017).

Finally, it has been recently shown that stem cells expressing typical MSC surface markers are present in fibrocartilage and that modulation of Wnt signaling plays an important role in the maintenance of this cell pool. Significantly, *in vivo* treatment with a Wnt inhibitor, sclerostin, induced cartilage formation and aided repair in an injured temporomandibular joint (Embree *et al.*, 2016). While the possibility of stimulating endogenous MSCs for tissue repair in humans is still in its infancy, this study provides proof of principle that by better understanding basic mechanism modulating tissue homeostasis it will be possible to develop minimally invasive effective treatments.

Adipose tissue and adipose tissue-derived stem cells

The human ADSCs most commonly studied are derived from white adipose tissue (WAT), whose function is to store fuel while acting as a proper endocrine organ by secreting leptin and adiponectin, two key energy homeostasis regulators. Heterogeneity in the biology of adipose cells within the WAT has been reported to be linked to sex, ethnicity, age and location of body depots (e.g. visceral versus subcutaneous adipose tissue); these differences can be both structural and molecular (e.g. cytokine production) (Badimon and Cubedo, 2017, Tchkonja *et al.*, 2013). It is not currently clear whether differences in mature WAT are mirrored by differences in

the biological properties of their precursors. The more widely used source of WAT for stem cell research is the subcutaneous abdominal fat.

The developmental origin of WAT is still largely unknown, however the advent of transgenic models, especially those with a Cre/Loxp-based tracing, has enormously helped to shed light on the embryological origin of WAT as well as the characterization of local progenitor cells within the adult organ, at least in animal models. The initial finding that peroxisome-proliferation-activated receptor γ (PPAR γ) expression is an early marker of adipocyte commitment, and that precursors are located in the mural compartment of the adipose tissue as PDGF β (platelet-derived growth factor receptor β)-positive cells, paved the way for other studies aimed at localizing and determining the phenotype of adipose tissue progenitor cells (Tran *et al.*, 2012). An intriguing property underlying plasticity of WAT precursor is that they may be bi-potential and able to generate both adipose and endothelial cells, as the studies tracing the expression of zinc finger protein 423 (Gupta *et al.*, 2010, Gupta *et al.*, 2012) and VE-cadherin (Tran *et al.*, 2012) have suggested; however other studies have contradicted these data (Berry and Rodeheffer, 2013). Embryologically, initial studies suggested that WAT originate from Myf5 (myogenic Factor 5)-negative precursors, unlike brown adipose tissue (BAT) and skeletal muscle which might share common Myf5-positive precursors (Seale *et al.*, 2008, Timmons *et al.*, 2007). However, it is now clear that some WAT cells can arise from Myf5-positive precursors. Lineage tracing using novel mouse models is shedding light on the high degree of complexity and heterogeneity of the developmental origin of WAT where different precursors may be recruited depending on the location of the fat depot (reviewed in Sanchez-Gurmaches and Guertin, 2014). For example, in mice the anterior subcutaneous and retroperitoneal WAT (as well as BAT) likely derive from a mixed population of Myf5-positive and Myf5-negative precursors, though enriched in Myf5-positive cells, while inguinal and perigonadal WAT arise mostly from a Myf5-negative line.

Intriguingly, analysis of abdominal WAT in humans who had received bone marrow stem cells (BM-MSCs) or mobilized peripheral blood stem cells transplants indicated the presence of donor-derived adipocytes, that are more likely derived from BM-MSCs than from haematopoietic progenitors (Ryden *et al.*, 2015). It is not clear, however, whether BM-MSCs contribute to the progenitor pool in the stromal fraction. Furthermore, given the ability of adipocytes to dedifferentiate *in vitro* (Matsumoto *et al.*, 2008), it is also conceivable that some of the cells present in fat-derived cultures might be of BM origin. The plasticity observed *in vitro* might not be only a feature of cultured cells. It has been recently suggested that ADSCs can transdifferentiate *in vivo* when injected in the mammary gland and contribute to the growing ducts by acquiring an epithelial phenotype (De Matteis *et al.*, 2009).

Although WAT origin is still not well understood, discrete set of cell surface markers that selectively recognize WAT progenitors have been described, even though no single marker is widely accepted for their localization and/or isolation *in vivo*. A study identified a population (CD45⁻, CD31⁻, Lin⁻, CD29⁺, Sca1⁺, CD34⁺, CD24⁺) of

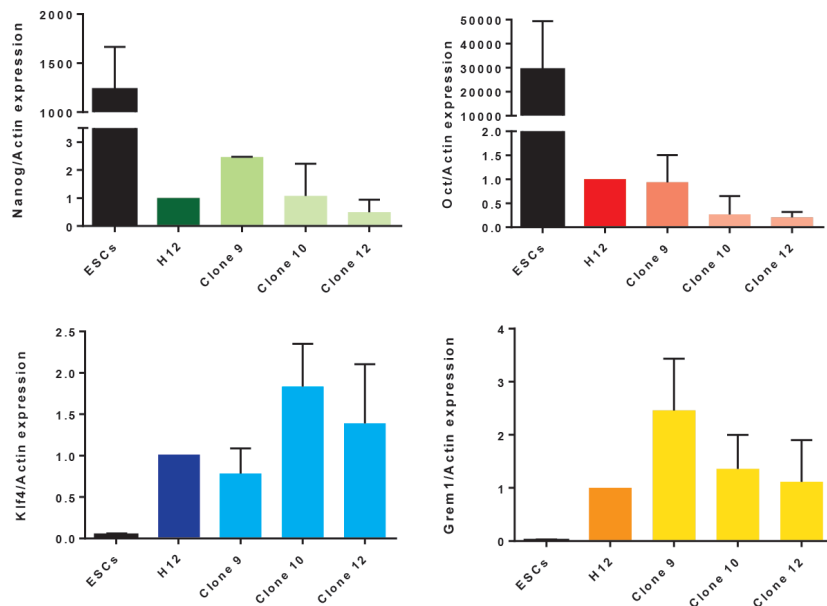


Fig. 2. Expression of pluripotent and mesenchymal stem cell transcripts in paediatric adipose-tissue derived stem cell (pADSC) parental line and clones as compared to human embryonic stem cells (hESCs). Expression was assessed by RT-qPCR. Note that expression of all genes is detected in parental line and clones, though NANOG and OCT4 at much lower levels, and KLF4 and GREM1 at higher levels than in hESCs. *: $P < 0.05$.

progenitors that is able to regenerate WAT upon transplantation into lipodystrophic mice (Rodeheffer *et al.*, 2008). However, depot- and even strain-specific differences in the presence and levels of expression of those cell surface markers have subsequently been reported (Joe *et al.*, 2009, Macotela *et al.*, 2012).

ADSCs have been extensively studied for their differentiation potential towards several lineages, both mesodermal and extra mesodermal. For example, we have described the high plasticity of ADSCs established from paediatric donors (pADSCs), and shown that selective skeletogenic differentiation is highly dependent on the induction medium (Guasti *et al.*, 2012). While there has been some indication that human ADSCs harbour also potential for myogenic differentiation (Desiderio *et al.*, 2013, Stern-Straeter *et al.*, 2014), we have been unable to unveil it in pADSCs using a variety of protocols including standard muscle differentiation protocols and small molecules; whether this reflects differences between adult and paediatric, or normal and patient-derived tissues, or differences in the experimental settings, remains to be elucidated. Nonetheless, pADSCs display significant plasticity, as they can easily undergo not only chondrogenic and osteogenic differentiation, but also differentiate towards neuroectodermal lineages. When exposed to a neural induction medium containing valproic acid, pADSCs differentiate towards neuronal-like cells (Guasti *et al.*, 2012, New *et al.*, 2015). In addition, we have shown that they acquire an epithelial-like morphology when treated with retinoic acid (RA), a small lipophilic molecule that directs several differentiation processes during development and induces regeneration in several systems (Maden and Hind, 2003). The occurrence of epithelial differentiation has been supported both by changes in gene and protein expression and by functional assays. Formation of tight junctions, detected by selective translocation of Zona Occludens-1 (ZO1) protein to establish cell-to-cell contacts, and induction of

cytokeratin 18 (CK18), that with K8 is expressed by simple epithelia at early developmental stages, was observed (New *et al.*, 2017). In addition, that study showed the barrier forming potential of the epithelially-induced pADSCs. The epithelial differentiation capability of pADSC we have observed is consistent with both *in vitro* and *in vivo* studies showing the ability of adult ADSCs to generate epithelia of endodermal origin (like most airway epithelia), such as the urothelium (Baer, 2011, Li *et al.*, 2014).

Significantly, the possibility of differentiating and co-culturing pADSC-derived cartilage and epithelium can be valuable both for modeling human tissue interactions to investigate cellular and molecular mechanisms of disease as well as for “organ” engineering. ADSCs are amongst the most promising MSCs for clinical application in autologous reconstructive surgery as they can be easily harvested using minimally invasive techniques with extremely low morbidity, even from paediatric patients, as well as displaying immunomodulatory properties like MSC from other sources. Hence pADSCs could potentially be harnessed in more complex translational settings, where both cartilaginous and epithelial tissues are required, such as for reconstructing deformities of the upper airways, including those of the nose and throat. While discussion of pADSCs potential for tissue reconstruction in patients with craniofacial deformities is not within the scope of this article, it should be noted that selective differentiation of pADSCs to chondrocytes can also be achieved within novel bioscaffolds, which are cyto-compatible for tissue engineering applications, such as POSS-PCU (polyhedral oligomeric silsesquioxane poly(carbonate-urea) urethane) and POSS-PCL (polyhedral oligosilsesquioxane-poly(ϵ -caprolactone)) (Griffin *et al.*, 2017, Guasti *et al.*, 2014, New *et al.*, 2017).

Are pediatric ADSCs truly plastic?

It has long been questioned whether somatic stem cells are indeed multipotent stem cells, or a heterogenous population of cells composed of subsets of unipotent progenitor cells. Some studies have supported the hypothesis that adult human ADSCs are multipotent stem cells, but one early study has suggested that not all clones possess the ability to undergo trilineage differentiation (Guilak *et al.*, 2006, Stillwell *et al.*, 2012). Hence we carried out clonal analysis of pADSCs to test whether their apparent plastic-

ity could be due to a fraction of the cell population endowed with multipotency or to different cells which can differentiate only into one or two lineages.

Results and Discussion

We isolated clones from ADSCs of a paediatric donor (male, age 16) by limiting dilution, with successful derivation of clones from 50% of visible single cells. The parent line displayed three-lineage differentiation potential (adipogenic, chondrogenic and osteogenic) as all the pADSC lines generated in our laboratory (>40) from paediatric patients (age range 7-17 years).

Previous studies had demonstrated expression of pluripotent markers in pADSCs and suggested that this may underlie their plasticity (Guasti *et al.*, 2012, Park and Patel, 2010). In order to establish whether this pattern of expression was maintained in clonal lines, we assessed expression of *KLF4* (*KRUPPEL-LIKE FACTOR 4*), *OCT4* (*OCTAMER-BINDING PROTEIN 4*, also known as POU domain, class 5, transcription factor 1, *POU5F1*) and *NANOG* (transcription factor named after Tir nan Òg, the mythical Celtic land of youth) in the parental line, 3 clones and human embryonic stem cells (hESCs). As shown in Fig. 2, gene expression levels of *OCT4* and *NANOG* were lower both in the parental pADSC line and in the clones, when compared to the levels found in hESCs, whereas *KLF4* expression was considerably higher in pADSCs. No significant differences were observed in the expression levels of these factors between clones. A previous paper correlated the high expression of *KLF4* with a more pluripotent phenotype, closer to that of an ESC. As well as an indicator of “stemness”, *KLF4* regulates a number of different cellular processes including proliferation, differentiation and apoptosis. Interestingly, *KLF4* was found to inhibit endodermal differentiation in murine ESCs (Aksoy *et al.*, 2014). The high levels of *KLF4* in pADSCs may play an important role in maintaining their undifferentiated status.

In contrast to ESCs, parental pADSCs and clonal lines expressed high levels of *GREM1* (*GREMLIN 1*). *GREM1* is a BMP (bone morphogenetic protein) antagonist that has been recently reported to identify clonogenic stem cell populations within the bone marrow and the intestine connective tissue in mice (Worthley *et al.*, 2015). Expression of *GREM1* in pADSC is consistent with self-renewal of

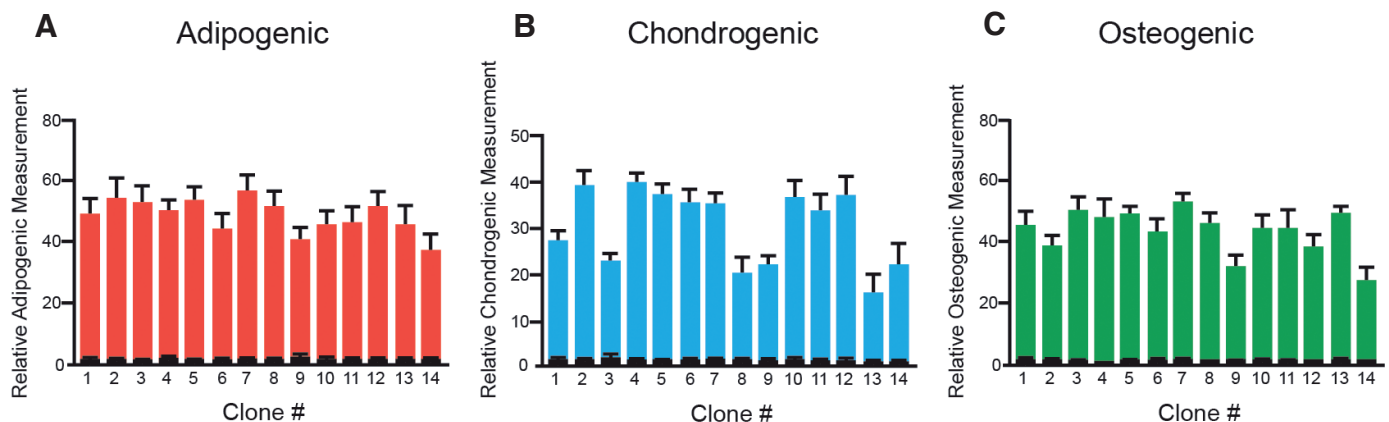


Fig. 3. Effect of induction of adipogenic, chondrogenic and osteogenic differentiation in three paediatric adipose-tissue derived stem cell (pADSC) cloned lines. Fourteen clones obtained from a single donor were differentiated towards (A) adipogenic, (B) chondrogenic and (C) osteogenic lineages for 21 days and then stained with Oil Red O (adipogenic), Alcian Blue (chondrogenic) and Alizarin Red (osteogenic) and quantified. As controls, cells were kept in non-inducing media for the same time. Mean \pm SEM, triplicate biological samples per clone, differentiated samples in colour, controls in black.

these cells, as even lines maintained in culture over 20 passages are still able to undergo multilineage differentiation, though their duplication time becomes a bit slower at around passage 10.

Clones were then tested for their mesenchymal differentiation capability by treating them with adipogenic, chondrogenic and osteogenic induction media; as shown in Fig. 3 all clones were able to differentiate towards the three lineages, albeit with different efficiencies (Fig. 3 A-C). Together, though not all of the single cells were able to expand efficiently, those that did clearly possessed multilineage mesenchymal potential. This supports the existence, within the pADSC cultures, of cells with intrinsic plasticity towards mesodermal lineages.

Having previously shown that pADSC can undergo non-mesodermal differentiation, we next investigated clonal line potential for epithelial and neuronal differentiation by comparing three clones and the parental line they were derived from. Following epithelial induction of pADSC clones (n=6), a general trend in up-regulation of the epithelial marker cyokeratin-18 (*CK18*) was observed in all clones and the parental line at the transcriptional level (Fig. 4A). The tight junction marker, zonula occludens-1 (ZO-1), was unchanged upon epithelial induction at a transcriptional level (not shown), but a clear translocation of ZO-1 from the cytoplasm to the plasma membrane after induction was noted in all the clones by immunocytochemistry (Fig. 4B).

Following induction of the clones with neurogenic media, a general trend in up-regulation of neural markers at the transcriptional level was noted (Fig. 4C). The neuronal marker transcript, neuron-specific enolase (*NSE*), and the Schwann cell marker, *PO*, were increased in all clones, albeit to varying degrees and with some differences in their time-course. The neurogenic potential of the pADSC clones was also investigated at the protein level. Protein expression of the neuronal markers, NF-200 and MAP2 (Fig. 4D), was assessed by immunofluorescence in pADSC clones. An increase in neural marker staining was observed in all clones tested (n=5). Whereas induction of neural markers was clearly observed here and consistent with previous studies, we have no evidence that neurally induced cells, either from parental or clonal lines, can develop into mature neurons or glia. Both our previous work with a different type of MSCs, the amniotic fluid-derived stem cells, and studies of adult ADSC from other groups cast doubts on the possibility of inducing true neurogenic differentiation in MSCs without genetic manipulations (Arribas et al., 2014, Prasongchean et al., 2012).

Concluding remarks

Notwithstanding intense research in the field, much has yet to be understood about the *in vivo* behavior and tissue-specific properties of human MSCs. Endogenous MSCs are not able to spontaneously mount a significant regenerative response in humans and reconstruct skeletal critical size defects. The possibility of recruiting them following injury in a similar fashion to that observed in

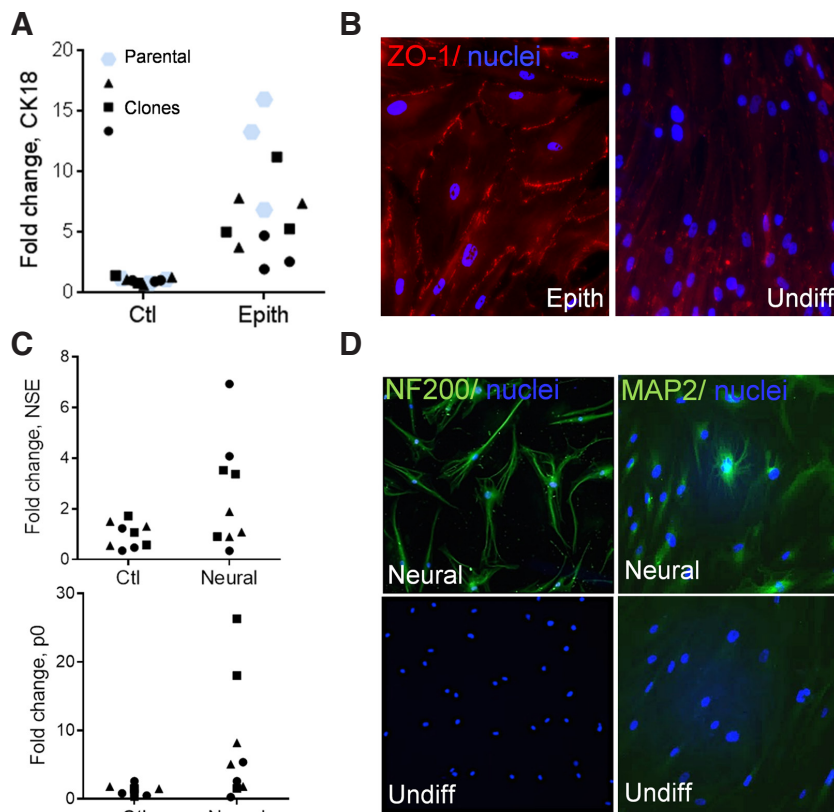


Fig. 4. Effect of induction of epithelial and neural differentiation in paediatric adipose-tissue derived stem cell (pADSC) cloned lines as compared to the parental line. **(A)** RT-qPCR analysis of *CK18* expression in 3 pADSC clones epithelially differentiated for 4 weeks. **(B)** Representative image of expression and cellular localization of ZO-1 in a clone of pADSCs following epithelial differentiation induction (Epith) and in the undifferentiate control (Undiff). **(C)** RT-qPCR analysis of neuronal (*NSE*) and glial (*PO*) marker expression in pADSCs after 2 weeks of neural induction. **(D)** Representative image of NF-200 and MAP2 expression in a neurally induced clone of pADSCs and in the undifferentiate control (undiff).

regenerating organs of fish and amphibians remains to date fairly remote. A more extensive knowledge of mechanisms governing regeneration in these systems as well as a better understanding of the biology of human endogenous MSCs *in vivo* will be needed to achieve this goal.

Human MSCs display significant plasticity *in vitro*, that, at least in the case of ADSCs from young individuals, appears to reflect the existence of a multipotent stem cell population; to some extent this plasticity may also be expressed *in vivo*, as grafted MSCs can home and differentiate at sites different from those they originated from. For what MSC potential in replacing missing structures is concerned, in the medium term their therapeutic value seems to lay mainly in their multilineage differentiation potential that can be harnessed for bioengineering different tissues.

Importantly, there is evidence from *in vitro* studies and grafting experiments in animals, as well as from some clinical trials, that MSCs are endowed with significant modulatory properties that can reduce damage and possibly contribute to functional repair in some diseased tissues.

In conclusion, these are indeed exciting times for human MSCs in the context of tissue damage and repair.

Materials and Methods

All chemicals were from Sigma-Aldrich, unless otherwise stated.

Human paediatric adipose tissue-derived stem cells

Abdominal adipose tissue was aspirated from consenting paediatric patients under ethical approval from the Camden and Islington Community Local Research Ethics Committee (London, UK). pADSCs used in this study were isolated from a 16 year old male as previously described (Guasti *et al.*, 2012, New *et al.*, 2017) and cultured in high glucose DMEM (Dulbecco's modified Eagle's medium) with GlutaMAX™, supplemented with 10% ES-FBS (ES-qualified foetal bovine serum) and 1% penicillin/streptomycin. Cells were grown in humidified incubators at 37 °C with 5% CO₂.

Clonal expansion

pADSCs were detached from the flask with trypsin-EDTA, counted and plated at a density of 0.8 cells/well in 96-well plates. Microscopic examination confirmed the presence or absence of single cells in wells. Medium was replaced twice a week, and when confluent, cells were amplified for experiments.

Differentiation

Differentiation was induced in clonal populations of pADSCs as previously described, by replacing the media with DMEM containing GlutaMAX™, 1% penicillin/streptomycin, 10% ES-FBS supplemented with a specific cocktail for either the mesenchymal (adipogenic, osteogenic or chondrogenic), epithelial or neural lineages (Guasti *et al.*, 2012, New *et al.*, 2015). The composition of the induction media used was as follows, 1) Adipogenic: DMEM 10% embryonic stem cells-qualified (ES)-FBS, 10 ng/ml insulin, 500 µM 3-isobutyl-1-methylxanthine, 1 µM dexamethasone, and 1 µM rosiglitazone (Molekula); 2) Chondrogenic: DMEM 10% ES-FBS, 0.1 µM dexamethasone, 10 ng/ml transforming growth factor (Tgf) β1 (R&D Systems), insulin-transferrin-selenium (ITS) (Life Technologies), and 50 µg/ml ascorbate; 3) Osteogenic: DMEM 10% ES-FBS, 0.1 µM dexamethasone, 100 µg/ml ascorbate, and 10 mM β-glycerophosphate, 4) Neural: DMEM with Glutamax supplemented with 1% penicillin/streptomycin, 10% ES-FBS, 10 µM forskolin, 5 mM KCl, 2 mM valproic acid, 1 µM hydrocortisone and 5 µg/ml insulin (Huang *et al.*, 2007); 4) Epithelial: DMEM 10% ES-FBS 10% with Glutamax, 5µM retinoic acid (Brzoska *et al.*, 2005). Cells were seeded onto Matrigel™-coated plates prior to epithelial differentiation.

Mesenchymal lineages differentiation was assessed and quantified at 3 weeks as previously described, by staining with Oil Red O for adipogenic differentiation, Alizarin Red for osteogenic differentiation or Alcian blue for chondrogenic differentiation (Guasti *et al.*, 2012). For epithelial and neural differentiation, the cells were analyzed after the specified length of time for gene and protein expression.

Reverse transcription-polymerase chain reaction and quantitative real-time polymerase chain reaction

RNA was extracted from biological replicates using Tri-Reagent (Life Technologies) according to the manufacturer's protocol and retro-transcribed with Moloney murine leukaemia virus reverse transcriptase (Promega). mRNA was quantified by real-time quantitative polymerase chain reaction using the Quantitect SYBR Green PCR kit (Qiagen) and the 7500-sequence detection system (Applied Biosystems) following the manufacturer's instructions. A list of the primers and their sequences are specified in Supplemental Table 1. Expression levels were normalised using the house keeping gene, GAPDH. Fold changes ±SD were calculated taking either the control undifferentiated cells (differentiation experiments) or the parental line (pluripotency markers) as a reference. Statistical analysis was carried out by one-way ANOVA. P values <0.05 were considered significant.

Immunofluorescence

Cells were fixed in 4% PFA prior to immunofluorescence protein detection followed by washing multiple times with phosphate buffered saline (PBS),

incubated with a blocking/permeabilizing buffer (10% FBS, 3% BSA, and 0.2% Triton-X100 in PBS) and then incubated overnight with the following primary antibodies: rabbit anti-ZO-1 (Life Technologies, 1:100 dilution in PBS), rabbit Anti NF-200 (Sigma, 1:200 dilution), mouse anti MAP2 (Life Technologies, 1:100 dilution). After washes, cells were incubated with secondary antibodies (Alexa Fluor 488 and 594, 1:400 dilution). Hoechst 33258 (2µg/ml, Sigma) was added during secondary antibody incubation to counterstain the cell nuclei. Negative controls were incubated with the secondary antibody and Hoechst 33258 only. Images were acquired with an inverted microscope Olympus IX71 (Carl Zeiss, Jena, Germany) equipped with a Hamamatsu ORCA-ER digital camera (Hamamatsu Corp., Bridgewater, NJ).

Acknowledgements

This study was supported by Newlife Foundation, NIHR GOSH BRC, MRC and BBSRC and the Erasmus Programme.

References

- AGRAWAL, V., JOHNSON, S.A., REING, J., ZHANG, L., TOTTEY, S., WANG, G., HIRSCHI, K.K., BRAUNHUT, S., GUDAS, L.J. and BADYLAK, S.F. (2010). Epimorphic regeneration approach to tissue replacement in adult mammals. *Proc Natl Acad Sci USA* 107: 3351-3355.
- AKSOY, I., GIUDICE, V., DELAHAYE, E., WIANNY, F., AUBRY, M., MURE, M., CHEN, J., JAUCH, R., BOGU, G.K., NOLDEN, T. *et al.*, (2014). Klf4 and Klf5 differentially inhibit mesoderm and endoderm differentiation in embryonic stem cells. *Nat Commun* 5: 3719.
- ARRIBAS, M.I., ROPERO, A.B., REIG, J.A., FRAGA, M.F., FERNANDEZ, A.F., SANTANA, A. and ROCHE, E. (2014). Negative neuronal differentiation of human adipose-derived stem cell clones. *Regen Med* 9: 279-93.
- BADIMON, L. and CUBEDO, J. (2017). Adipose tissue depots and inflammation: effects on plasticity and resident mesenchymal stem cell function. *Cardiovasc Res* 113: 1064-1073.
- BAER, P.C. (2011). Adipose-derived stem cells and their potential to differentiate into the epithelial lineage. *Stem Cells Dev* 20: 1805-1816.
- BEKHTE, M.M., FINKENSIEPER, A., REBHAN, J., HUSE, S., SCHULTZE-MOSGAU, S., FIGULLA, H.R., SAUER, H. and WARTENBERG, M. (2014). Hypoxia, leptin, and vascular endothelial growth factor stimulate vascular endothelial cell differentiation of human adipose tissue-derived stem cells. *Stem Cells Dev* 23: 333-351.
- BERG, D.A., KIRKHAM, M., BELJAJEVA, A., KNAPP, D., HABERMANN, B., RYGE, J., TANAKA, E.M. and SIMON, A. (2010). Efficient regeneration by activation of neurogenesis in homeostatically quiescent regions of the adult vertebrate brain. *Development* 137: 4127-4134.
- BERRY, R. and RODEHEFFER, M.S. (2013). Characterization of the adipocyte cellular lineage in vivo. *Nat Cell Biol* 15: 302-308.
- BLANCO, B., HERRERO-SANCHEZ, M.D., RODRIGUEZ-SERRANO, C., GARCIA-MARTINEZ, M.L., BLANCO, J.F., MUNTION, S., GARCIA-ARRANZ, M., SANCHEZ-GUIJO, F. and DEL CANIZO, C. (2016). Immunomodulatory effects of bone marrow versus adipose tissue-derived mesenchymal stromal cells on NK cells: implications in the transplantation setting. *Eur J Haematol* 97: 528-537.
- BRZOSKA, M., GEIGER, H., GAUER, S. and BAER, P. (2005). Epithelial differentiation of human adipose tissue-derived adult stem cells. *Biochem Biophys Res Commun* 330: 142-150.
- CRISAN, M., YAP, S., CASTEILLA, L., CHEN, C.W., CORSELLI, M., PARK, T.S., ANDRIOLO, G., SUN, B., ZHENG, B., ZHANG, L. *et al.*, (2008). A perivascular origin for mesenchymal stem cells in multiple human organs. *Cell Stem Cell* 3: 301-313.
- CUI, X., HE, Z., LIANG, Z., CHEN, Z., WANG, H. and ZHANG, J. (2017). Exosomes From Adipose-derived Mesenchymal Stem Cells Protect the Myocardium Against Ischemia/Reperfusion Injury Through Wnt/beta-Catenin Signaling Pathway. *J Cardiovasc Pharmacol* 70: 225-231.
- DA SILVA MEIRELLES, L., MALTA, T.M., DE DEUS WAGATSUMA, V.M., PALMA, P.V., ARAUJO, A.G., RIBEIRO MALMEGRIM, K.C., MORATO DE OLIVEIRA, F., PANEPUCCHI, R.A., SILVA, W.A., JR., KASHIMA HADDAD, S. *et al.*, (2015). Cultured Human Adipose Tissue Pericytes and Mesenchymal Stromal Cells Display a Very Similar Gene Expression Profile. *Stem Cells Dev* 24: 2822-2840.
- DE MATTEIS, R., ZINGARETTI, M.C., MURANO, I., VITALI, A., FRONTINI, A., GI-

- ANNULIS, I., BARBATELLI, G., MARCUCCI, F., BORDICCHIA, M., SARZANI, R. *et al.*, (2009). *In vivo* physiological transdifferentiation of adult adipose cells. *Stem Cells* 27: 2761-2768.
- DESIDERIO, V., DE FRANCESCO, F., SCHIRALDI, C., DE ROSA, A., LA GATTA, A., PAINO, F., D'AQUINO, R., FERRARO, G.A., TIRINO, V. and PAPACCIO, G. (2013). Human Ng2+ adipose stem cells loaded *in vivo* on a new crosslinked hyaluronic acid-Lys scaffold fabricate a skeletal muscle tissue. *J Cell Physiol* 228: 1762-1773.
- EMBREE, M.C., CHEN, M., PYLAWKA, S., KONG, D., IWAOKA, G.M., KALAJZIC, I., YAO, H., SHI, C., SUN, D., SHEU, T.J. *et al.*, (2016). Exploiting endogenous fibrocartilage stem cells to regenerate cartilage and repair joint injury. *Nat Commun* 7: 13073.
- FERRETTI, P. and GÉRAUDIE, J. (1998). *Cellular and Molecular Basis of Regeneration: From Invertebrates to Humans*. John Wiley and Sons, Ltd, Chichester, England.
- FRIEDENSTEIN, A.J., PETRAKOVA, K.V., KUROLESOVA, A.I. and FROLOVA, G.P. (1968). Heterotopic of bone marrow. Analysis of precursor cells for osteogenic and hematopoietic tissues. *Transplantation* 6: 230-247.
- GALENDE, E., KARAKIKES, I., EDELMANN, L., DESNICK, R.J., KERENYI, T., KHOUEIRY, G., LAFFERTY, J., MCGINN, J.T., BRODMAN, M., FUSTER, V. *et al.*, (2010). Amniotic fluid cells are more efficiently reprogrammed to pluripotency than adult cells. *Cell Reprogram* 12: 117-125.
- GAO, F., CHIU, S.M., MOTAN, D.A., ZHANG, Z., CHEN, L., JI, H.L., TSE, H.F., FU, Q.L. and LIAN, Q. (2016). Mesenchymal stem cells and immunomodulation: current status and future prospects. *Cell Death Dis* 7: e2062.
- GEBLER, A., ZABEL, O. and SELIGER, B. (2012). The immunomodulatory capacity of mesenchymal stem cells. *Trends Mol Med* 18: 128-134.
- GHOSH, S., THOROGOOD, P. and FERRETTI, P. (1996). Regeneration of lower and upper jaws in urodeles is differentially affected by retinoic acid. *Int J Dev Biol* 40: 1161-1170.
- GODWIN, J. (2014). The promise of perfect adult tissue repair and regeneration in mammals: Learning from regenerative amphibians and fish. *Bioessays* 36: 861-871.
- GOSS, J.M. (1969). *Principles of Regeneration*. Academic Press, New York.
- GRIFFIN, M.F., IBRAHIM, A., SEIFALIAN, A.M., BUTLER, P.E.M., KALASKAR, D.M. and FERRETTI, P. (2017). Chemical group-dependent plasma polymerisation preferentially directs adipose stem cell differentiation towards osteogenic or chondrogenic lineages. *Acta Biomater* 50: 450-461.
- GUASTI, L., PRASONGCHEAN, W., KLEFTORIOUS, G., MUKHERJEE, S., THRASHER, A.J., BULSTRODE, N.W. and FERRETTI, P. (2012). High plasticity of paediatric adipose tissue-derived stem cells: too much for selective skeletogenic differentiation?. *Stem Cells Trans Med* 1: 384-395.
- GUASTI, L., VAGASKA, B., BULSTRODE, N.W., SEIFALIAN, A. and FERRETTI, P. (2014). Chondrogenic differentiation of adipose tissue-derived stem cells within nanocaged POSS-PCU bioscaffolds: a new tool for nanomedicine. *Nanomedicine: NBM* 10: 279-289.
- GUILAK, F., LOTT, K.E., AWAD, H.A., CAO, Q., HICOK, K.C., FERMOR, B. and GIMBLE, J.M. (2006). Clonal analysis of the differentiation potential of human adipose-derived adult stem cells. *J Cell Physiol* 206: 229-237.
- GUPTA, R.K., ARANY, Z., SEALE, P., MEPANI, R.J., YE, L., CONROE, H.M., ROBY, Y.A., KULAGA, H., REED, R.R. and SPIEGELMAN, B.M. (2010). Transcriptional control of preadipocyte determination by Zfp423. *Nature* 464: 619-623.
- GUPTA, R.K., MEPANI, R.J., KLEINER, S., LO, J.C., KHANDEKAR, M.J., COHEN, P., FRONTINI, A., BHOWMICK, D.C., YE, L., CINTI, S. *et al.*, (2012). Zfp423 expression identifies committed preadipocytes and localizes to adipose endothelial and perivascular cells. *Cell Metab* 15: 230-239.
- HASS, R., KASPER, C., BOHM, S. and JACOBS, R. (2011). Different populations and sources of human mesenchymal stem cells (MSC): A comparison of adult and neonatal tissue-derived MSC. *Cell Commun Signal* 9: 12.
- HU, L., WANG, J., ZHOU, X., XIONG, Z., ZHAO, J., YU, R., HUANG, F., ZHANG, H. and CHEN, L. (2016). Exosomes derived from human adipose mesenchymal stem cells accelerates cutaneous wound healing via optimizing the characteristics of fibroblasts. *Sci Rep* 6: 32993.
- HUANG, T., HE, D., KLEINER, G. and KULUZ, J. (2007). Neuron-like differentiation of adipose-derived stem cells from infant piglets *in vitro*. *J Spinal Cord Med* 30 Suppl 1: S35-S40.
- HYNES, K., MENICANIN, D., GRONTHOS, S. and BARTOLD, M.P. (2016). Differentiation of iPSC to Mesenchymal Stem-Like Cells and Their Characterization. *Methods Mol Biol* 1357: 353-374.
- JOE, A.W., YI, L., EVEN, Y., VOGL, A.W. and ROSSI, F.M. (2009). Depot-specific differences in adipogenic progenitor abundance and proliferative response to high-fat diet. *Stem Cells* 27: 2563-2570.
- KANG, T., JONES, T.M., NADDELL, C., BACANAMWO, M., CALVERT, J.W., THOMPSON, W.E., BOND, V.C., CHEN, Y.E. and LIU, D. (2016). Adipose-Derived Stem Cells Induce Angiogenesis via Microvesicle Transport of miRNA-31. *Stem Cells Transl Med* 5: 440-450.
- LEE, M., BAN, J.J., KIM, K.Y., JEON, G.S., IM, W., SUNG, J.J. and KIM, M. (2016). Adipose-derived stem cell exosomes alleviate pathology of amyotrophic lateral sclerosis *in vitro*. *Biochem Biophys Res Commun* 479: 434-439.
- LI, H., XU, Y., XIE, H., LI, C., SONG, L., FENG, C., ZHANG, Q., XIE, M., WANG, Y. and LV, X. (2014). Epithelial-differentiated adipose-derived stem cells seeded bladder acellular matrix grafts for urethral reconstruction: an animal model. *Tissue Eng Part A* 20: 774-784.
- MACOTELA, Y., EMANUELLI, B., MORI, M.A., GESTA, S., SCHULZ, T.J., TSENG, Y.H. and KAHN, C.R. (2012). Intrinsic differences in adipocyte precursor cells from different white fat depots. *Diabetes* 61: 1691-1699.
- MADEN, M. and HIND, M. (2003). Retinoic acid, a regeneration-inducing molecule. *Dev Dyn* 226: 237-244.
- MATSUMOTO, T., KANO, K., KONDO, D., FUKUDA, N., IRIBE, Y., TANAKA, N., MATSUBARA, Y., SAKUMA, T., SATOMI, A., OTAKI, M. *et al.*, (2008). Mature adipocyte-derived dedifferentiated fat cells exhibit multilineage potential. *J Cell Physiol* 215: 210-222.
- MELE, L., VITIELLO, P.P., TIRINO, V., PAINO, F., DE ROSA, A., LICCARDO, D., PAPACCIO, G. and DESIDERIO, V. (2016). Changing Paradigms in Cranio-Facial Regeneration: Current and New Strategies for the Activation of Endogenous Stem Cells. *Front Physiol* 7: 62.
- MELIEF, S.M., ZWAGINGA, J.J., FIBBE, W.E. and ROELOFS, H. (2013). Adipose tissue-derived multipotent stromal cells have a higher immunomodulatory capacity than their bone marrow-derived counterparts. *Stem Cells Transl Med* 2: 455-463.
- MILLER, F.D. and KAPLAN, D.R. (2012). Mobilizing endogenous stem cells for repair and regeneration: are we there yet? *Cell Stem Cell* 10: 650-652.
- MURRAY, I.R. and PEAULT, B. (2015). Q&A: Mesenchymal stem cells - where do they come from and is it important? *BMC Biol* 13: 99.
- NEW, S.E., IBRAHIM, A., GUASTI, L., ZUCHELLI, E., BIRCHALL, M., BULSTRODE, N.W., SEIFALIAN, A.M. and FERRETTI, P. (2017). Towards reconstruction of epithelialized cartilages from autologous adipose tissue-derived stem cells. *J Tissue Eng Regen Med* 11: 3078-3089.
- NEW, S.E.P., ALVAREZ-GONZALEZ, C., VAGASKA, B., GOMEZ, S.G., BULSTRODE, N.W., MADRIGAL, A. and FERRETTI, P. (2015). A matter of identity - Phenotype and differentiation potential of human somatic stem cells. *Stem Cell Research* 15: 1-13.
- PARK, E. and PATEL, A.N. (2010). Changes in the expression pattern of mesenchymal and pluripotent markers in human adipose-derived stem cells. *Cell Biol Int* 34: 979-984.
- PAUL, S., SCHINDLER, S., GIOVANNONE, D., DE MILLO TERRAZZANI, A., MARIANI, F.V. and CRUMP, J.G. (2016). Ihha induces hybrid cartilage-bone cells during zebrafish jawbone regeneration. *Development* 143: 2066-2076.
- PRASONGCHEAN, W., BAGNI, M., CALZAROSSA, C., DE COPPI, P. and FERRETTI, P. (2012). Amniotic fluid stem cells increase embryo survival following injury. *Stem Cells Dev* 21: 675-688.
- RODEHEFFER, M.S., BIRSOY, K. and FRIEDMAN, J.M. (2008). Identification of white adipocyte progenitor cells *in vivo*. *Cell* 135: 240-249.
- RODRIGUEZ, L.V., ALFONSO, Z., ZHANG, R., LEUNG, J., WU, B. and IGNARRO, L.J. (2006). Clonogenic multipotent stem cells in human adipose tissue differentiate into functional smooth muscle cells. *Proc Natl Acad Sci USA* 103: 12167-12172.
- RYDEN, M., UZUNEL, M., HARD, J.L., BORGSTROM, E., MOLD, J.E., ARNER, E., MEJHERT, N., ANDERSSON, D.P., WIDLUND, Y., HASSAN, M. *et al.*, (2015). Transplanted Bone Marrow-Derived Cells Contribute to Human Adipogenesis. *Cell Metab* 22: 408-417.
- SANCHEZ-GURMACHES, J. and GUERTIN, D.A. (2014). Adipocyte lineages: tracing back the origins of fat. *Biochim Biophys Acta* 1842: 340-351.
- SEALE, P., BJORK, B., YANG, W., KAJIMURA, S., CHIN, S., KUANG, S., SCIME, A., DEVARAKONDA, S., CONROE, H.M., ERDJUMENT-BROMAGE, H. *et al.*, (2008). PRDM16 controls a brown fat/skeletal muscle switch. *Nature* 454: 961-967.
- SIMKIN, J., SAMMARCO, M.C., DAWSON, L.A., SCHANES, P.P., YU, L. and MU-NEOKA, K. (2015). The mammalian blastema: regeneration at our fingertips.

- Regeneration (Oxf)* 2: 93-105.
- SIMKIN, J., SAMMARCO, M.C., MARRERO, L., DAWSON, L.A., YAN, M., TUCKER, C., CAMMACK, A. and MUNEOKA, K. (2017). Macrophages are required to coordinate mouse digit tip regeneration. *Development* 144: 3907-3916.
- SLACK, J.M. (2017). Animal regeneration: ancestral character or evolutionary novelty? *EMBO Rep* 18: 1497-1508.
- SPALLANZANI, L. (1768). *Programme ou précis d'un ouvrage sur les reproductions animales* Geneva.
- SQUILLARO, T., PELUSO, G. and GALDERISI, U. (2016). Clinical Trials With Mesenchymal Stem Cells: An Update. *Cell Transplant* 25: 829-848.
- STERN-STRAETER, J., BONATERA, G.A., JURITZ, S., BIRK, R., GOESSLER, U.R., BIEBACK, K., BUGERT, P., SCHULTZ, J., HORMANN, K., KINSCHERF, R. *et al.*, (2014). Evaluation of the effects of different culture media on the myogenic differentiation potential of adipose tissue- or bone marrow-derived human mesenchymal stem cells. *Int J Mol Med* 33: 160-170.
- STILLWELL, C., WANG, F., XIANG, B., DENG, J., KASHOUR, T., LIU, H., FREED, D., ARORA, R.C. and TIAN, G. (2012). Adipose tissue houses different subtypes of stem cells. *Can J Physiol Pharmacol* 90: 1295-1301.
- STOCUM, D. (2006). *Regenerative Biology and Medicine* Academic Press, Canada.
- STRECKFUSS-BOMEKE, K., WOLF, F., AZIZIAN, A., STAUSKE, M., TIBURCY, M., WAGNER, S., HUBSCHER, D., DRESSEL, R., CHEN, S., JENDE, J. *et al.*, (2013). Comparative study of human-induced pluripotent stem cells derived from bone marrow cells, hair keratinocytes, and skin fibroblasts. *Eur Heart J* 34: 2618-2629.
- STUBBENDORFF, M., DEUSE, T., HUA, X., PHAN, T.T., BIEBACK, K., ATKINSON, K., EIERMANN, T.H., VELDEN, J., SCHRODER, C., REICHENSPURNER, H. *et al.*, (2013). Immunological properties of extraembryonic human mesenchymal stromal cells derived from gestational tissue. *Stem Cells Dev* 22: 2619-2629.
- SUN, N., PANETTA, N.J., GUPTA, D.M., WILSON, K.D., LEE, A., JIA, F., HU, S., CHERRY, A.M., ROBBINS, R.C., LONGAKER, M.T. *et al.*, (2009). Feeder-free derivation of induced pluripotent stem cells from adult human adipose stem cells. *Proc Natl Acad Sci USA* 106: 15720-15725.
- SZARAZ, P., GRATCH, Y.S., IQBAL, F. and LIBRACH, C.L. (2017). *In vitro* Differentiation of Human Mesenchymal Stem Cells into Functional Cardiomyocyte-like Cells. *J Vis Exp*. 2017 Aug 9;(126). doi: 10.3791/55757
- TCHKONIA, T., THOMOU, T., ZHU, Y., KARAGIANNIDES, I., POTHOUKAKIS, C., JENSEN, M.D. and KIRKLAND, J.L. (2013). Mechanisms and metabolic implications of regional differences among fat depots. *Cell Metab* 17: 644-656.
- THOMOU, T., MORI, M.A., DREYFUSS, J.M., KONISHI, M., SAKAGUCHI, M., WOLFRUM, C., RAO, T.N., WINNAY, J.N., GARCIA-MARTIN, R., GRINSPOON, S.K. *et al.*, (2017). Adipose-derived circulating miRNAs regulate gene expression in other tissues. *Nature* 542: 450-455.
- TIMMONS, J.A., WENNMALM, K., LARSSON, O., WALDEN, T.B., LASSMANN, T., PETROVIC, N., HAMILTON, D.L., GIMENO, R.E., WAHLESTEDT, C., BAAR, K. *et al.*, (2007). Myogenic gene expression signature establishes that brown and white adipocytes originate from distinct cell lineages. *Proc Natl Acad Sci USA* 104: 4401-4406.
- TOH, W.S., LAI, R.C., HUI, J.H.P. and LIM, S.K. (2017). MSC exosome as a cell-free MSC therapy for cartilage regeneration: Implications for osteoarthritis treatment. *Semin Cell Dev Biol* 67: 56-64.
- TRAN, K.V., GEALEKMAN, O., FRONTINI, A., ZINGARETTI, M.C., MORRONI, M., GIORDANO, A., SMORLESI, A., PERUGINI, J., DE MATTEIS, R., SBARBATI, A. *et al.*, (2012). The vascular endothelium of the adipose tissue gives rise to both white and brown fat cells. *Cell Metab* 15: 222-229.
- TZAHOR, E. and POSS, K.D. (2017). Cardiac regeneration strategies: Staying young at heart. *Science* 356: 1035-1039.
- ULLAH, I., SUBBARAO, R.B. and RHO, G.J. (2015). Human mesenchymal stem cells - current trends and future prospective. *Biosci Rep*. 35. pii: e00191.
- VIGNAIS, M.L., CAICEDO, A., BRONDELLO, J.M. and JORGENSEN, C. (2017). Cell Connections by Tunneling Nanotubes: Effects of Mitochondrial Trafficking on Target Cell Metabolism, Homeostasis, and Response to Therapy. *Stem Cells Int* 2017: 6917941.
- WORTHLEY, D.L., CHURCHILL, M., COMPTON, J.T., TAILOR, Y., RAO, M., SI, Y., LEVIN, D., SCHWARTZ, M.G., UYGUR, A., HAYAKAWA, Y. *et al.*, (2015). Gremlin 1 identifies a skeletal stem cell with bone, cartilage, and reticular stromal potential. *Cell* 160: 269-284.
- ZHAO, H., FENG, J., HO, T.V., GRIMES, W., URATA, M. and CHAI, Y. (2015). The suture provides a niche for mesenchymal stem cells of craniofacial bones. *Nat Cell Biol* 17: 386-396.
- ZIELINS, E.R., RANSOM, R.C., LEAVITT, T.E., LONGAKER, M.T. and WAN, D.C. (2016). The role of stem cells in limb regeneration. *Organogenesis* 12: 16-27.

Further Related Reading, published previously in the *Int. J. Dev. Biol.*

Changes in the expression of cyclin dependent kinase inhibitors during differentiation of immortalized fibroblasts into adipocytes
Ibon Alonso, Antonio Baroja, Blanca Fernández, Raquel Vielba, Jon Elorriaga, Jairo Pérez-Sanz, Juan Aréchaga, Juan J. Goirieta de Gandarias and Carmen de la Hoz

Int. J. Dev. Biol. (2017) 61: 89-93
<https://doi.org/10.1387/ijdb.160416cd>

Growth factor-defined culture medium for human mesenchymal stem cells

Sumiyo Mimura, Naohiro Kimura, Mitsui Hirata, Daiki Tateyama, Midori Hayashida, Akihiro Umezawa, Arihiro Kohara, Hiroki Nikawa, Tetsuji Okamoto and Miho K. Furue

Int. J. Dev. Biol. (2011) 55: 181-187
<https://doi.org/10.1387/ijdb.103232sm>

Adipocyte is a non-trivial, dynamic partner of breast cancer cells

Jinxiang Tan, Emilie Buache, Marie-Pierre Chenard, Nassim Dali-Youcef, Marie-Christine Rio

Int. J. Dev. Biol. (2011) 55: 851-859
<https://doi.org/10.1387/ijdb.113365jt>

Pdx1-transfected adipose tissue-derived stem cells differentiate into insulin-producing cells in vivo and reduce hyperglycemia in diabetic mice

Hiromitsu Kajiyama, Tatsuo S. Hamazaki, Makoto Tokuhara, Shinji Masui, Koji Okabayashi, Kiyoshi Ohnuma, Shigeharu Yabe, Kazuki Yasuda, Shoichi Ishiura, Hitoshi Okochi and Makoto Asashima

Int. J. Dev. Biol. (2010) 54: 699-705
<https://doi.org/10.1387/ijdb.092953hk>

Pdx1-transfected adipose tissue-derived stem cells differentiate into insulin-producing cells in vivo and reduce hyperglycemia in diabetic mice

Hiromitsu Kajiyama, Tatsuo S. Hamazaki, Makoto Tokuhara, Shinji Masui, Koji Okabayashi, Kiyoshi Ohnuma, Shigeharu Yabe, Kazuki Yasuda, Shoichi Ishiura, Hitoshi Okochi and Makoto Asashima

Int. J. Dev. Biol. (2010) 54: 699-705
<https://doi.org/10.1387/ijdb.092953hk>

Genetic and epigenetic instability of human bone marrow mesenchymal stem cells expanded in autologous serum or fetal bovine serum

John-Arne Dahl, Shivali Duggal, Neralie Coulston, Douglas Millar, John Melki, Aboulghassem Shahdadfar, Jan E. Brinchmann and Philippe Collas

Int. J. Dev. Biol. (2008) 52: 1033-1042
<https://doi.org/10.1387/ijdb.082663jd>

5 yr ISI Impact Factor (2016) = 2.421

