

Met signaling mutants as tools for developmental studies

CAROLA PONZETTO^{*,1}, GUIDO PANTÉ¹, CHIARA PRUNOTTO¹, ALESSANDRO IERACI¹
and FLAVIO MAINA²

¹Dept. of Anatomy, Pharmacology and Forensic Medicine, University of Turin, Italy and

²EMBL, Meyerhofstrasse 1, Heidelberg, Germany.

ABSTRACT The Met receptor is widely expressed in embryonic and adult epithelial tissues; its ligand (hepatocyte growth factor/scatter factor, HGF/SF) is expressed in the mesenchymal component of various organs. The generation of *hgf* and *met* null mice has revealed an essential role for this ligand-receptor pair in the development of the placenta, liver, and limb muscles. However the early lethality of the null mutants has precluded analysis of Met function in late development. To extend the possible observation period, we generated mutant *met* alleles of different severity. This was done by impairing the ability of the receptor to transduce the HGF/SF signal, *via* mutation of consensus sequences in the multifunctional docking site present in the C-terminal tail of the receptor. Mice expressing a Met mutant still active as a kinase, but unable to recruit its effectors, died in mid-gestation with the same phenotype as the *met* knockout, proving the importance of phosphotyrosine-SH2 interactions *in vivo*. Mice expressing a Met receptor with partial loss of signaling function survived until birth and revealed novel aspects of HGF/SF-Met function during muscle development.

KEY WORDS: *Met signaling, Met in development, hypaxial muscle development.*

Introduction

Met tyrosine kinase is the receptor for HGF/SF (Bottaro *et al.*, 1991; Naldini *et al.*, 1991), a mesenchyme-derived pleiotropic growth factor, active on a variety of target cells. Among these are hepatocytes, melanocytes, keratinocytes, cells of the mammary, renal, gastric and biliary epithelium, as well as hematopoietic precursors, vascular endothelial cells, and neurons. The biological responses of cultured cells to HGF/SF range from survival and proliferation, to dissociation of epithelial sheets (scatter) and branching morphogenesis (for reviews see Gherardi and Stoker, 1991; Zarnegar and Michalopoulos, 1995; Boros and Miller, 1995; Matsumoto and Nakamura, 1996).

In vivo HGF/SF is a potent angiogenic factor (Bussolino *et al.*, 1992; Grant *et al.*, 1993) and is involved in regeneration of organs including liver, kidney and lung (Michalopoulos and De Frances, 1997; Matsumoto and Nakamura, 1997; Balkovetz and Lipschutz, 1999). Altered *met* expression and constitutive activation of the receptor have been described in human tumours and cell lines, suggesting a role for Met signaling in malignancy (Jeffers *et al.*, 1996). Recently, a direct genetic link between *MET* and human cancer has been established by identifying activating mutations in the Met kinase in hereditary and sporadic papillary kidney carcinoma (Schmidt *et al.*, 1997 and 1999).

In situ hybridization has revealed that transcripts of the ligand and the receptor are juxtaposed during embryogenesis, suggesting a paracrine mode of interaction and a possible role for HGF/SF-Met in epithelial-mesenchymal transitions occurring during development (Sonnenberg *et al.*, 1993 a and b). During organogenesis *hgf* is expressed at the highest level in placenta, liver and limb buds. The labyrinth layer of the placenta does not develop properly in *hgf* or *met* null mice, which, as a consequence, die in mid-gestation (Uehara *et al.*, 1995; Schmidt *et al.*, 1995). In these embryos the liver starts developing normally, but, beginning at E12.5, hepatocytes undergo massive apoptosis (Schmidt *et al.*, 1995). Finally, *c-met* null embryos lack limb and diaphragm muscles (Bladt *et al.*, 1995). This is due to the inability of mutant myoblast precursors to de-laminate from the lateral lip of the dermomyotome and initiate long-range migration in response to HGF/SF (Bladt *et al.*, 1995; Dietrich *et al.*, 1999). This phenotype recapitulates the 'scatter' effect originally seen in epithelial cells *in vitro*.

Given the embryonal lethality of the homozygous null for *hgf/sf* and *met* and considering that expression of the ligand and the receptor persists postnatally and in the adult, there are a number

Abbreviations used in this paper: Met, Met protein; *met*, mouse gene; *MET*, human gene; HGF/SF, hepatocyte growth factor/scatter factor; etc.

*Address correspondence to: Carola Ponzetto. Dept. of Anatomy, Pharmacology and Forensic Medicine. C.so Massimo d'Azeglio 52, 10126 Torino, Italy. TEL.: 39 011 670 7799. FAX: 39 011 670 7732. e-mail: carola.ponzetto@unito.it

of questions left open on their physiological role. It remains to be determined, for instance, whether HGF/SF-Met are involved in morphogenesis of the mammary gland (as organ culture experiments seem to indicate, Yang *et al.*, 1995), or in liver and kidney regeneration, as suggested by a number of *in vivo* experiments. Lastly, nothing is known of the possible role for HGF/SF-Met in the adult brain, where they are co-expressed in the cortex, hippocampus and amygdala (Honda *et al.*, 1995).

Answers to some of these questions may come from tissue-specific or conditional knockouts for the Met receptor. As an alternative approach, we have generated mice carrying *met* alleles of different severity, taking advantage of the mechanism of signal transduction used by the Met receptor. Met is linked to all its effectors *via* ligand-induced phosphorylation of two critical tyrosine residues located in a multifunctional docking site (Y₁₃₄₉VHVNATY₁₃₅₆VNV) in the carboxy-terminal tail of the molecule (Ponzetto *et al.*, 1994). Effectors such as phosphatidylinositol 3-kinase (PI 3-Kinase), phospholipase C γ (PLC γ) and Src can be directly recruited to the receptor *via* interaction with either of the two phosphotyrosines (Ponzetto *et al.*, 1993 and 1994). Grb2, the adapter for the Ras guanyl-nucleotide exchanger Sos, binds at high affinity only to the YVNV motif, given its requirement for an Asn in +2 (Songyang *et al.*, 1993). Downstream effectors can also be recruited indirectly *via* the Gab-1 adaptor, which is the major substrate for the Met kinase (Weidner *et al.*, 1996). Although in the yeast two hybrid system Gab-1 interacts directly with the bidentate docking site (Weidner *et al.*, 1996), *in vivo* it associates with Met mainly *via* Grb2 (Fixman *et al.*, 1997; Bardelli *et al.*, 1997). Thus the YVNV consensus is particularly critical for Met signaling, since it links the receptor with the Ras pathway and with the Gab-1 adaptor. Gab-1 is essential in at least some of the cellular responses to HGF (Fixman *et al.*, 1997; Bardelli *et al.*, 1997). It is, however, also phosphorylated in response to other growth factors and cytokines, among which are insulin and epidermal growth factor (EGF) (Holgado-Madruga *et al.*, 1996), nerve growth factor (NGF) (Holgado-Madruga *et al.*, 1997), and interleukin-6 (IL-6) (Takahashi-Tezuka, 1998).

Indeed, the phenotype of Gab-1 null embryos has features which partially overlap with those observed not only in embryos lacking HGF/SF, but also platelet growth factor (PDGF), EGF and leukemia inhibiting factor (LIF), confirming that this molecule is a signal amplifier common to a broad range of receptors (Itoh *et al.*, 2000).

We and others have shown that Y \rightarrow F mutation of the two tyrosines of the multifunctional docking site (Met^{Double}, thereafter indicated as Met^D) abrogates receptor function in transfected cells (Ponzetto *et al.*, 1994; Zhu *et al.*, 1994; Weidner *et al.*, 1995; Fixman *et al.*, 1995). Conversely, N \rightarrow H mutation in the YVNV consensus (resulting in the loss of the Grb2 binding site, Met^{Grb2}) interferes with some (but not all) Met-mediated events. The signal conveyed by the Met^{Grb2} mutant is in fact permissive for motility (Ponzetto *et al.*, 1996), but inadequate to promote branching tubulogenesis in MDCK cells (Fournier *et al.*, 1996), or for Tpr-Met-mediated transformation (Ponzetto *et al.*, 1996).

Having analysed the consequences of lowering Met signaling, we next attempted to correlate Met-mediated biological effects with the activation of specific pathways. This is more difficult for Met, which relies on a bidentate docking site of mixed specificity, than for other receptors (such as the PDGFR) possessing multiple docking sites of high specificity. These in fact can be mutated one by one to evaluate the consequences of the loss of single pathways (Fantl *et al.*, 1992). In the case of Met we modified the consensus sequences of the multifunctional docking site to enhance direct coupling with Grb2 (Met^{2xGrb2}) or with PI 3-kinase (Met^{2xPI3K}). Both mutants resulted in a partial loss of biological function when tested in transfected cells (Giordano *et al.*, 1997; Bardelli *et al.*, 1999), confirming that the full spectrum of physiological effects of HGF requires activation of a delicate balance of downstream effectors.

The Met signaling mutants described above have all been transferred in the mouse by homologous recombination. This review summarises the results obtained with the first set of mutations, aimed at lowering Met signaling either severely (Met^D) or weakly (Met^{Grb2}) (Maina *et al.*, 1996; see Fig. 1). The mice generated by introduction of the Met^{2xGrb2} and Met^{2xPI3K} mutations will be described elsewhere (Maina *et al.*, submitted).

Results

Uncoupling effectors from the Met receptor *in vivo* results in a mid-gestation lethal phenotype, similar to that of the met null

We sought to determine the importance of the bidentate docking site Y₁₃₄₉VHVNATY₁₃₅₆VNV in Met signaling *in vivo* by introducing Y \rightarrow F mutations of tyrosine 1349 and 1356 in the mouse genome. This was done by knocking-in the *met* locus a mutated human cDNA fragment coding for the transmembrane and cytoplasmic domain of the receptor (Maina *et al.*, 1996). The resulting recombinant Met protein (*met^D*) consisted of a murine extracellular domain fused to a human transmembrane and cytoplasmic domain (Fig. 1). As a control we also knocked-in a wild type human MET cDNA (*met^{AVT}*). Homozygous *met^{AVT/WT}* mice were normal, while homozygous *met^{D/D}* embryos died *in utero* in mid-gestation, with the same timing and phenotype as the *met* knockout (Maina *et al.*, 1996; Birchmeier and Gherardi, 1998). In particular, from E 12.5 on, in *met^{D/D}* embryos the development of the placenta was impaired and the size of the liver was reduced. Tunel staining revealed numerous apoptotic nuclei in mutant hepatocytes. Furthermore, these embryos lacked a subset of skeletal muscles

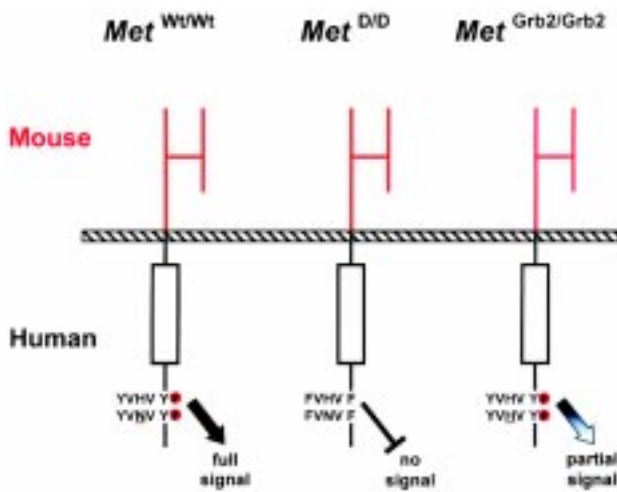


Fig. 1. Met signaling mutants expressed by knock-in mice. The recombinant Met receptor is a chimeric protein consisting of a murine extracellular domain (red) fused to a human transmembrane and cytoplasmic domain (black). *met^{Wt/Wt}*, chimeric protein with wild-type multifunctional docking site; *met^{D/D}*, chimeric protein without docking site; *met^{Grb2/Grb2}*, chimeric protein with disrupted Grb2 binding site.

(hypaxial muscles of the limbs, diaphragm and tip of the tongue) which all derive from migratory precursors (Dietrich *et al.* 1999). Deep muscles of the back and intercostals (epaxial), which develop *in situ* (Denetclaw *et al.*, 1997), were normal.

The description of the skeletal muscle defects of the *met^{D/D}* embryos was further refined by crossing these mice with transgenics expressing the *lacZ* gene under the myosin light chain promoter (Kelly *et al.*, 1997). Staining for β -galactosidase activity revealed that, in addition to the absence of appendicular muscles, *met^{D/D}* embryos also lacked superficial body wall muscles (Prunotto *et al.*, in preparation). The latter derive, like appendicular muscles, from myoblast precursors found in the ventro-lateral lip of the dermomyotome. However, in the flank these precursors do not disperse, but remain epithelially arranged while the dermomyotome elongates as a continuous sheet of cells (Dietrich *et al.*, 1998); proliferation, rather than active migration, appears to be the driving force of dermomyotomal elongation. This defect suggests that during hypaxial muscle development HGF/SF-Met may have a more complex role than simply controlling emigration of myoblast precursors.

Finally, *met^{D/D}* mutants were useful to better define the emerging neurogenic role for HGF/SF and Met (Maina and Klein, 1999). *In vitro* studies suggested that HGF/SF could act as a chemoattractant and a survival factor for a subpopulation of embryonic motor neurons (Ebens *et al.*, 1996; Yamamoto *et al.*, 1997; Wong *et al.*, 1997). The analysis of *met^{D/D}* embryos indeed showed defects at the level of limb motor innervation (shortening of motor nerves and reduction of branching, Maina *et al.*, 1997). These studies also revealed a role for HGF/SF-Met in survival and axonal outgrowth of sensory (Maina *et al.*, 1997) and sympathetic neurons (Maina *et al.*, 1998), and in differentiation of their precursors. The network of sensory fibres innervating the skin of the limbs and the trunk was found to be greatly reduced in *met^{D/D}* embryos. Furthermore HGF/SF dramatically enhanced NGF-induced neurite outgrowth from cultured dorsal root ganglia (DRG) explanted from control mice, while DRGs from *met^{D/D}* mutants did not respond. Analysis of DRG sections during the period of Met-dependent neurite outgrowth (E12.5) revealed a consistent increase in cell death in the mutant embryos (Maina *et al.*, 1997). Lastly, cultures of superior cervical ganglia from *met^{D/D}* embryos were used to show that HGF enhances the survival and differentiation of sympathetic neuroblasts and cooperates with NGF to enhance the axonal and neurite outgrowth of sympathetic neurons (Maina *et al.*, 1998).

Lowering the signaling threshold of the Met receptor in vivo results in a hypomorphic mutant which develops to birth

To obtain a hypomorphic mutant for the Met receptor we knocked-in the *met* gene a mutated cDNA carrying a N→H muta-

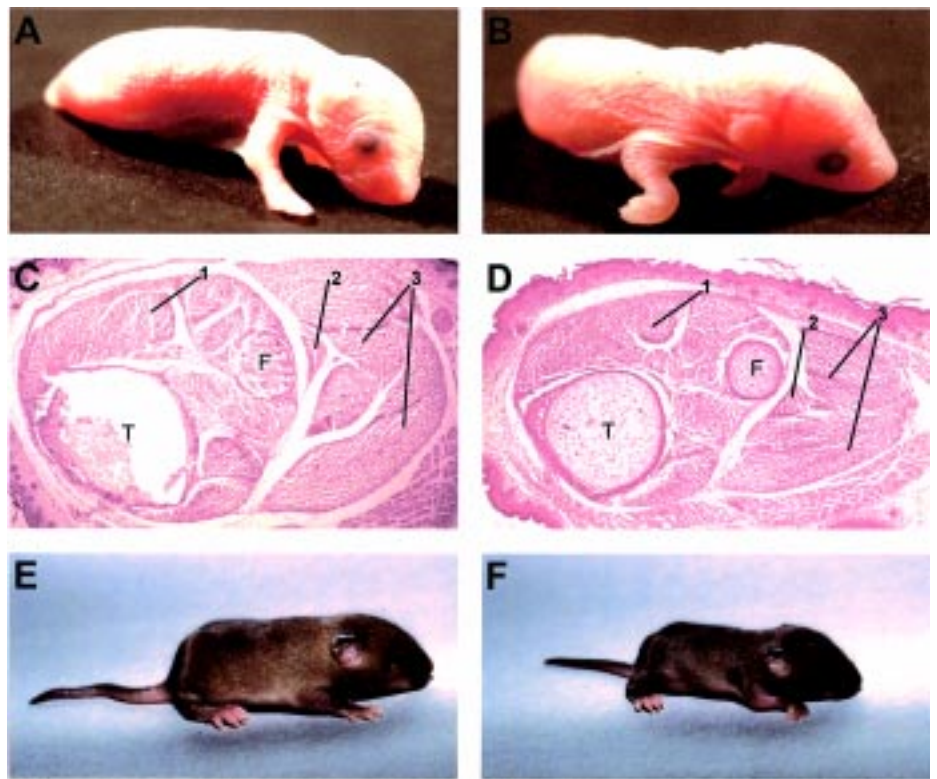


Fig. 2. Limb muscle defects of the *met^{Grb2/Grb2}* homozygous mutant. Homozygous mutant neonates (**B**) display abnormal position of forelimbs compared with control littermates (**A**). Histological analysis of sections distal to the knee of the hind limb from (**C**) control and (**D**) mutant *met^{Grb2/Grb2}* neonates. Transverse paraffin sections were stained with haematoxylin and eosin. T, tibia; F, fibula. Individual muscles are indicated by numbers: 1, extensor digitorum longus; 2, soleus; 3, gastrocnemius. (**F**) *met^{Grb2/Grb2}* survivor at age two weeks; the animal retains the hyperflexed forelimb phenotype and is smaller than (**E**) the control.

tion in the YVNV consensus of the bidentate docking site, resulting in the loss of Grb2 binding (*met^{Grb2}*, Maina *et al.*, 1996). This mutant in transfected cells was permissive for motility but not for tubulogenesis or transformation (Ponsetto *et al.*, 1996; Fournier *et al.*, 1996). Homozygous *met^{Grb2/Grb2}* mice were born alive. The placenta appeared to be morphologically normal, indicating that the signaling output of the *met^{Grb2}* mutant is sufficient to rescue placental development. The liver and motor and sensory innervation also appeared normal in *met^{Grb2/Grb2}* mice (Table 1; Maina *et al.*, 1996 and 1997).

On the other hand, *met^{Grb2/Grb2}* mice had hyperflexed forelimbs, weak hind limbs, and showed respiratory distress, due to a significant reduction of appendicular and diaphragm muscles (panel A and B of Fig. 2 and Maina *et al.*, 1996). Forelimbs seemed to be more severely affected than hind limbs. In forelimbs, extensors (derived from precursors of the dorsal pre-muscle mass) were more severely reduced than flexors (Maina *et al.*, 1996), thus explaining the hyperflexed forelimb phenotype. Panel C and D of Fig. 2 show sections of the hind limb of a control mouse and of a *met^{Grb2/Grb2}* mutant. In this case, flexor muscles (including the *gastrocnemius*), derived from the ventral pre-muscle mass, seemed to be the most affected. It should be noted that in these mice migratory precursors of appendicular muscles appeared to delaminate properly from the somite, and that at least the initial

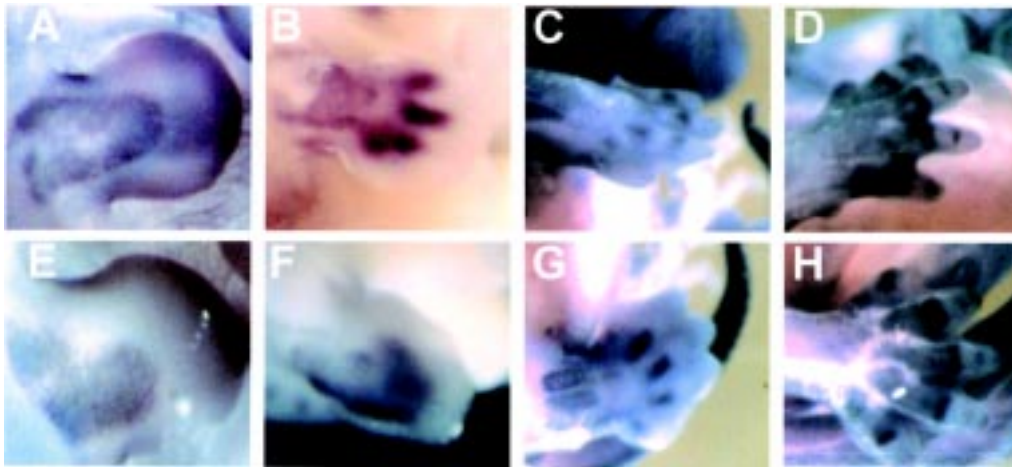


Fig. 3. Expression of *met* during limb development. Whole-mount *in situ* hybridization with a digoxigenin labelled *met* probe. A-D, fore limb; E-H, hind limb. (A and E) At E11.5, *met* is highly expressed in proliferating embryonal myoblasts. (B and F) At E12.5, *met* expression is downregulated proximally and persists distally along the digits, corresponding to pre-cartilaginous condensations. (C and G) At E13.5, *met* is re-expressed in the developing muscles, in concomitance with the proliferation of fetal myoblasts. (D and H) At E14.5, *met* expression is mainly localised in the joints region.

stages of their migration into the limb bud did not seem to be compromised (Maina *et al.*, 1996).

The majority of the *met*^{Grb2/Grb2} pups died in the first hours after birth most likely because of their inability to breathe properly, due to their weak diaphragm (Maina *et al.*, 1996). Occasionally a few *met*^{Grb2/Grb2} mutants survived into adulthood. During the first few postnatal weeks they did not increase in size like the controls, retained the hyperflexed phenotype in their forelimbs, and showed a reduction in total muscle mass (see panel E and F of Fig. 2). However with time these animals did recover in body size, muscle mass and strength.

Surprisingly, histological analysis of muscle sections of *met*^{Grb2/Grb2} new-borns also showed abnormal morphology in intercostal and deep back (epaxial) muscles. Epaxial muscles derive from non-migratory precursors originating in the dorsal-medial lip of the dermomyotome, a site which, like the ventro-lateral lip of the somite, is positive for Met expression (Yang *et al.*, 1996; Denetclaw *et al.*, 1997). Up to mid-gestation, however, Met signaling must be redundant for the development of these muscles, since they are unaffected in the more severe *met* null and *met*^{D/D} embryos. The appearance of this defect in later stages of myogenesis suggests that Met may be required to mediate proliferation of fetal myoblasts from which secondary fibres are formed. Indeed bromo-deoxyuridine incorporation into myogenic nuclei at E17.5 was found to be reduced in intercostal muscles of *met*^{Grb2/Grb2} embryos, suggesting that HGF/SF may contribute to trigger proliferation of all fetal myoblasts *in vivo* (Maina *et al.*, 1996).

The temporal pattern of *met* expression in fetal limb muscles supports this possibility. *Met* is highly expressed up to day E11.5 in the proliferating embryonal myoblasts forming the dorsal and ventral pre-muscle masses (see panels A and E in Fig. 3). At E12.5 *met* is downregulated in the differentiated primary fibres in the limbs. Its expression is maintained only distally along the digits, presumably in correspondence of pre-cartilaginous condensations (panels B and F in Fig. 3). At day 13.5, in concomitance with resumption of proliferation of fetal myoblasts, *met* is re-expressed in the developing muscles (panel C and G in Fig. 3). Interestingly, at E14.5 the highest level of *met* expression is in the region of the future joints, where expression of HGF has also been demonstrated (Takebayashi *et al.*, 1995). Thus the HGF/SF-Met pair could play a role in chondrocyte development as well.

HGF/SF enhances DNA synthesis in cultured epaxial fetal myoblasts

To verify the effect of HGF/SF on epaxial fetal myoblasts, deep back muscles were removed from E13.5 embryos, digested with collagenase and cultured. Addition of HGF to these cultures resulted in a 24% increase in BrdU incorporation in myogenic (desmin positive) cells relative to controls (Fig. 4). A similar proliferative response was elicited by basic fibroblast growth factor (bFGF). This *in vitro* result supports a possible role for HGF/SF on fetal myoblast proliferation *in vivo*.

HGF/SF promotes proliferation and delays differentiation of satellite cells in culture

A proliferative role for HGF/SF has been demonstrated for satellite cells, myoblasts which lie quiescent under the basal lamina of adult muscle fibres. *Met* is expressed in quiescent satellite cells (Cornelison and Wold, 1997), and HGF/SF is capable of activating satellite cells *in vitro* (Allen *et al.*, 1995; Gal-Levi *et al.*, 1997; Tatsumi *et al.*, 1998). This has suggested a potential role for HGF/SF in the early phase of muscle regeneration, when satellite cells must re-enter the cell cycle. Indeed, in the rat, transcription of HGF/SF increases during the first few days after muscle injury (Jennische *et al.*, 1993). To verify the proliferative effect of HGF/SF on satellite cells, we prepared cultures from single muscle fibre explants obtained from adult mice (panel A of Fig. 5; Bischoff, 1986). Such preparations result in a higher yield and purity of satellite cells than those obtained starting from minced muscle. Single fibres were maintained in enriched growth medium until the

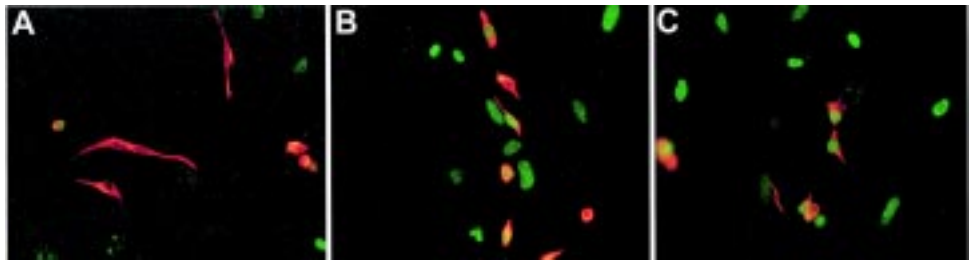
TABLE 1.

PHENOTYPE OF EMBRYOS HOMOZYGOUS FOR THE INDICATED MET SIGNALING MUTANTS

	Placenta	Liver (Limb and body wall)	Muscle	Motor Nerves	Sensory nerves
<i>met</i> ^{Wt/Wt}	+	+	+	+	+
<i>met</i> ^{D/D}	-	-	-	-	-
<i>met</i> ^{Grb2/Grb2}	+	+	±	+	+

Fig. 4. HGF/SF stimulates BrdU incorporation in epaxial fetal myoblasts in culture.

Deep back muscle was taken from E13.5 embryos of mixed genetic background, digested with collagenase, and plated for 5 h in high serum medium, after a 10 min pre-plating to remove part of the fibroblasts. The medium was then switched to low serum with or without growth factor for 8 h before the addition of BrdU. Cells were incubated with BrdU overnight and then fixed and stained using anti-desmin (Cy-3, red) and anti-BrdU (FITC, green) antibodies to discriminate proliferating myogenic from non-myogenic cells. (A) BrdU incorporation in low serum condition shows few BrdU/desmin positive cells. (B) Addition of 50 U/ml of recombinant HGF/SF to low serum medium resulted in a 24 % increase in the number of double-labelled cells relative to (A). (C) A similar proliferative response was elicited using 20 ng/ml of recombinant bFGF.



few associated satellite cells migrated out of the basal lamina (panel B Fig. 5). On the third day, cultures were switched to differentiation medium with or without addition of recombinant HGF/SF. Fig. 5 shows the appearance of these cultures five days after the switch. Satellite cells rapidly differentiated into small myotubes in differentiation medium (panel C). Addition of HGF resulted in a delay in differentiation and a significant increase of small round mono-nucleate satellite cells (panel D). A similar dual effect of HGF/SF has also been observed in cultures of chicken satellite cells (Gal-Levi *et al.*, 1997; Miller *et al.*, 2000).

HGF/SF induces cyclin D1 expression and nuclear translocation of cdk4 in C2C12 myogenic cells

To understand the basis for the proliferative response of myoblasts to HGF/SF we studied its effects on cyclin D1 and cdk4, which are involved in the control of cell cycle progression and in inhibition of myogenic differentiation. For these studies we used the C2C12 myoblast cell line, where it has been shown that myogenic differentiation and MyoD expression can be inhibited by transfection of a constitutively active Met kinase (Anastasi *et al.*, 1997).

Panel A in Fig. 6 shows that cyclin D1 is undetectable in the nuclei of starved C2C12 cells. A six hours treatment with HGF/SF induced the appearance of cyclin D1 in the majority of the myogenic nuclei (panel B). Concomitant with this increase there was also nuclear translocation of cdk4 (panels C and D). Modulation of cyclin D1 levels and nuclear translocation of the cyclin D1-cdk4 complex has been described as a major mechanism by which mitogens inhibit myogenic differentiation (Zhang *et al.*, 1999 a and b).

Discussion

The approach that we have taken to modify Met function *in vivo* (interfering with Met signaling by mutation of SH2 docking sites) was based on knowledge of the mechanism adopted by this and other tyrosine kinase receptors to carry out signal transduction. Tyrosine kinase receptors recruit cytoplasmic effectors via short recognition motifs, composed of phosphotyrosine followed by three to five downstream residues, which are generated by autophosphorylation upon ligand-dependent receptor activation. Effectors associate with the receptor with their own SH2 domains or by forming a complex with SH2-containing adaptors. Phosphotyrosine-SH2 interactions are usually quite specific, thus the sequence of the SH2 docking sites on a given receptor dictates which SH2-containing targets will associate with the receptor (for a review see Pawson and Scott, 1997).

Met, the receptor for HGF/SF and the closely related members of its family Ron and Sea, represent an unusual case. Rather than possessing numerous specific docking sites, they rely on two closely spaced phosphotyrosines in their carboxy-terminal tail to convey the bulk of their signaling activity (Ponzetto *et al.*, 1994; Iwama *et al.*, 1996; Park and Hayman, 1999). These tyrosine residues are part of a bidentate 'multifunctional' docking site (Y₁₃₄₉VHVNATY₁₃₅₆VNV in Met), which can bind a number of SH2-containing signaling proteins. In all three members of the Met family the second phosphotyrosine is embedded in an optimal motif for the Grb2 adaptor. Grb2 links the Met receptor with two critical effectors, the Ras guanyl-nucleotide exchanger Sos and the Gab-1 protein (Ponzetto *et al.*, 1994; Fixman *et al.*, 1997; Bardelli *et al.*, 1997). Gab-1 is a signal amplifier common to other tyrosine kinase receptors (Holgado-Madruga *et al.*, 1996). It contains a pleckstrin domain and a number of potential phosphoryla-

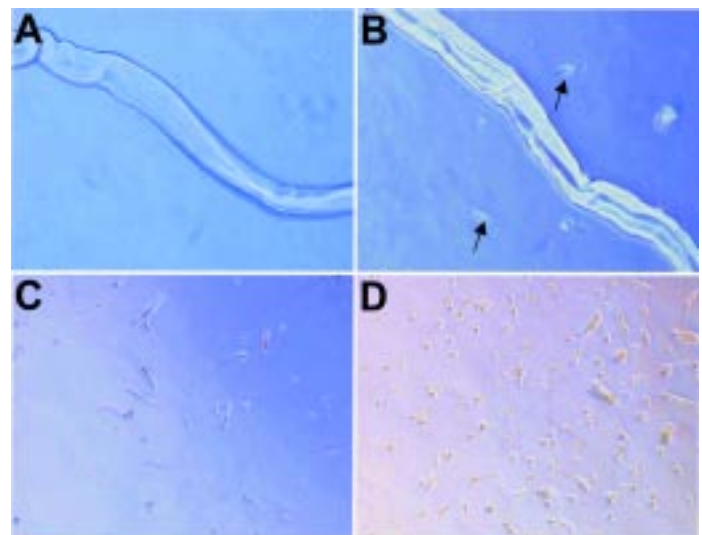


Fig. 5. HGF/SF promotes proliferation and delays differentiation of satellite cells in culture. High purity satellite cell cultures were obtained using single muscle fibre explants from adult mice. (A) Isolated single muscle fibres were maintained in enriched growth medium until (B) the few associated satellite cells (black arrows) migrated out of the basal lamina (two to three days). Cultures were then switched to low serum and photographed five days later. (C) Lowering the serum concentration resulted in rapid differentiation of satellite cells into small myotubes. (D) The addition of 50 U/ml of recombinant HGF/SF resulted in fewer myotubes and in an increase of small round mononucleate satellite cells.

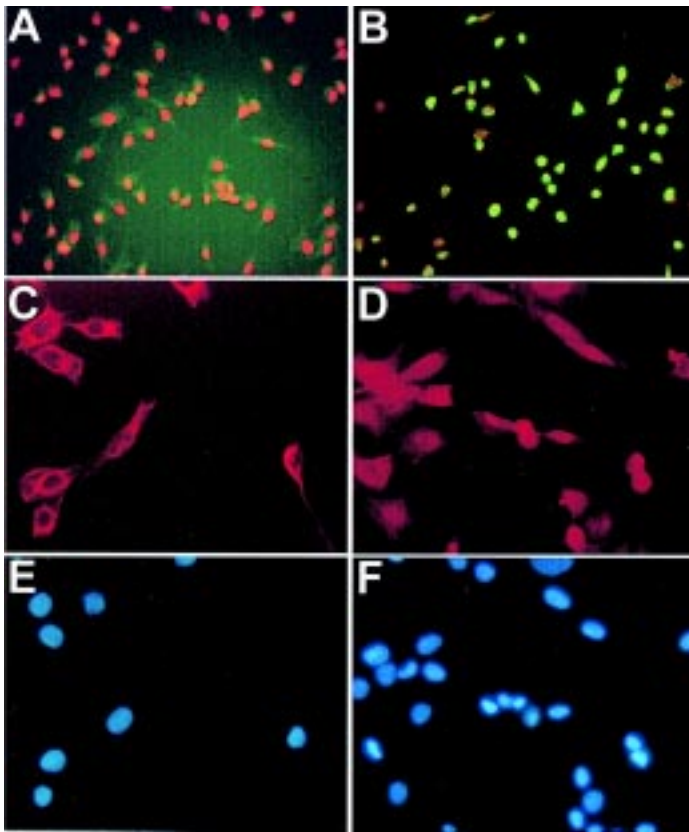


Fig. 6. HGF/SF induces cyclin D1 expression and cdk4 nuclear translocation in C2C12 myogenic cells. C2C12 myoblasts were starved at low serum for 14 h and stained using antibodies specific for (A,B) cyclin D1 and (C,D) cdk4. (A) Cyclin D1 is undetectable in the nuclei, stained in Red by DAPI. (B) A 6 h treatment with 50U/ml of recombinant HGF/SF induced cyclin D1 expression (FITC, green). (C, D) The same treatment of C2C12 myogenic cells resulted in the nuclear translocation of cdk4 (Cy-3 red). (E,F) DAPI staining.

tion sites, some of which are optimal binding sites for PI 3-kinase, PLC- γ , and the tyrosine phosphatase SHP2. Gab-1 is critical for mediating HGF-induced branching tubulogenesis in MDCK cells (Weidner *et al.*, 1996; Maroun *et al.*, 1999).

We tested *in vivo* the effects of abrogating recruitment of SH2-containing effectors to the Met receptor without interfering with its tyrosine kinase activity, by converting to phenylalanine the two tyrosine residues of the Met multifunctional docking site (Met^D) *via* homologous recombination. The resulting phenotype showed the same defects as the *met* null (placenta, liver, muscle, and motor innervation), confirming for the first time in mice the importance of phosphotyrosine-SH2 interactions in tyrosine kinase receptor signaling (Ponzetto, 1998).

In particular, from E13.5 on, the placenta of *met*^{D/D} embryos was paler and smaller than controls. Analysis of the placenta in *hgf* and *met* null mice revealed a reduction in the trophoblast cells of the labyrinth layer (Schmidt *et al.*, 1995; Uehara *et al.*, 1995). Interestingly, the same defect has recently been described in Gab-1 null mice (Itoh *et al.*, 2000), suggesting that HGF/SF-Met signaling through Gab-1 is critical for development of these cells. *met*^{D/D} mutants also have an apoptotic liver and lack muscles of the limbs, diaphragm and tip of the tongue, as observed in the *met* null (Bladt

et al., 1995). In these embryos, muscle precursors at limb level in the lateral dermomyotomal lips do not undergo de-epithelialization and do not enter the limb bud, confirming that Met signaling in myogenic precursors is essential for the initial steps of long-range migration.

Interestingly, however, the Met ligand is expressed along the entire route followed by migratory cells and in their target sites, suggesting that HGF/SF may guide muscle precursors toward their final destination (Dietrich *et al.*, 1999). Experiments done by applying beads soaked with HGF/SF to the flank of chick embryos to verify its chemotactic effect were inconclusive (Heymann *et al.*, 1996; Brand-Saberi *et al.*, 1996). The strongest indication of a true chemotactic role for HGF/SF comes from the phenotype of transgenics expressing HGF/SF ectopically. In these mice there is aberrant development of muscles around the spinal cord, implying misrouting of migratory myoblasts toward the ectopic source of HGF/SF (Takayama *et al.*, 1996). However, HGF/SF in these animals is probably at far higher than physiological levels. The prolonged requirement for active Met signaling during long range migration may fulfill additional requirements of migrating cells, such as the need to maintain the undifferentiated state (Scaal *et al.*, 1999) or to sustain their proliferation.

The additional Met mutant that we tested *in vivo* was obtained by modifying the consensus sequence of the second of the two tyrosines of the multifunctional docking site to uncouple the Grb2 adaptor (Y₁₃₅₆VNV→Y₁₃₅₆VHV, Met^{Grb2}). This mutation, besides impairing activation of the Ras pathway (Besser *et al.*, 1997) has the effect of lowering overall Met signaling, since Grb2 is responsible for linking the Met receptor not only to Sos but also to the signal amplifier Gab-1. In transfected MDCK cells, over-expression of Gab-1 can rescue the branching tubulogenesis defect of this mutant, but not of the Met^D mutant. The Met^{Grb2} mutant may thus retain some residual binding capacity for Gab-1, since the latter may directly interact with the mutated bidentate docking site (Maroun *et al.*, 1999).

The phenotype of the *met*^{Grb2/Grb2} mutants was milder than that of the *met*^{D/D} mice. The residual signaling ability of Met^{Grb2} seems to be sufficient for normal development of placenta, liver, and motor and sensory innervation. The tissue most sensitive to the lowered Met signaling threshold appeared to be skeletal muscle.

met^{Grb2/Grb2} mice showed severe reduction of appendicular and diaphragm muscles, deriving from migratory precursors. Muscle cell progenitors, however, did not seem to be impaired in their ability to delaminate from the somite and to start their migration. Similarly, the timing of their differentiation did not seem to be altered. A possible explanation for the partial defect observed could be failure of myogenic precursors to survive or to proliferate properly, while on route toward their site of destination. This would again imply a more complex role for HGF/SF-Met on embryonal myoblasts than that of mediator of somite de-epithelialization and chemotaxis.

There are several other hints that support this hypothesis. First of all by crossing the *met*^D mutant with mice expressing *lacZ* under the myosin light chain promoter (Kelly *et al.*, 1997) we observed that *met*^{D/D} embryos also lack superficial body wall muscles, besides muscles of the limbs. The former belong to the hypaxial group deriving from the ventro-lateral dermomyotome, but their precursors do not undergo active migration. These muscles are laid down along the flanks of the embryo as the lateral lips of the

dermomyotome elongate by continuous proliferation. Thus the role of Met in their development must be distinct from that of mediating somite delamination and/or long range migration.

Furthermore, *met* is expressed from early embryonic stages in the dorsal lip of the dermomyotome where precursors of epaxial muscles originate (Yang *et al.*, 1996). In *met^{D/D}* and in *met^{Grb2/Grb2}* mutants epaxial muscles are normal up to mid-gestation, indicating that Met signaling is redundant during primary myogenesis. However, histological analysis of these muscles in *met^{Grb2/Grb2}* mice at birth reveals a reduction in secondary fibres. Met may thus contribute to the development of these muscles at the onset of secondary myogenesis, when fetal myoblasts re-enter the cell cycle and resume proliferation, after temporary quiescence. Indeed the proliferative capacity of fetal myogenic cells appears to be reduced in *met^{Grb2/Grb2}* embryos, as indicated by lower BrdU incorporation *in vivo*. In support of this hypothesis, we have now shown that cultures of epaxial myoblasts obtained from E13.5 embryos respond to HGF/SF by an increase in BrdU incorporation. Nevertheless, the role of HGF/SF in fetal myoblast proliferation remains controversial. In fact Dietrich *et al.* (1999), who recently obtained perinatal *met* null fetuses after tetraploid rescue of the placenta, did not find any defect in trunk muscles.

On the other hand several reports describe a proliferative effect of HGF/SF on satellite cells (Allen *et al.*, 1995; Gal-Levi *et al.*, 1997; Tatsumi *et al.*, 1998 and this review). This, together with the observed increased level of expression of HGF/SF in the first few days after muscle injury (Jennische *et al.*, 1993) has suggested that HGF/SF may trigger muscle regeneration *in vivo*. Proof of involvement of HGF/SF-Met in regeneration (of muscle or of any tissue) awaits a viable loss-of-function model. This will most likely be a conditional knockout.

We have recently obtained a viable *met^{Grb2/Grb2}* mutant making use of a modified knock-in targeting vector in which the *neo* cassette (see Maina *et al.*, 1996) was flanked by *loxP* sites. Neo sequences are known to de-stabilise transcripts, and for this reason it is desirable to remove them from recombinant loci. This was done by crossing the new mutant with the Cre *Deleter* (Schwenk *et al.*, 1995). The resulting *met^{Grb2/Grb2neo}* mutants are viable and apparently normal. This suggests that the previous *met^{Grb2/Grb2}* mice represent a 'sensitised' model, where the effects of the partial loss of function mutation ($Y_{1356}^{VNV} \rightarrow Y_{1356}^{VHV}$) and of a decreased level of *met* transcript (and protein) add up to produce the observed phenotype. Viable *met^{Grb2/Grb2neo}* mutants, although apparently free of developmental defects, may still prove useful to evaluate the role of HGF/SF-Met in tissue and organ regeneration, and their function in adult tissues such as brain, where a higher threshold of Met signaling may be required.

Since our first report on the generation of mice expressing Met signaling mutants by homologous recombination (Maina *et al.*, 1996), the same approach has been applied to a number of receptors. Y→F mutation of the tyrosine residue leading to activation of PLC γ in the Fibroblast Growth Factor Receptor 1 (FGFR1) surprisingly revealed that this docking site mediates a negative rather than a positive signal (Partanen *et al.*, 1998). On the other hand, mutation of the Shc binding site in *trkB* unveiled a difference in the signaling output triggered by the two neurotrophins NT4 and BDNF, with the former being less potent than the latter in eliciting the MAP kinase response (Minichiello *et al.*, 1998). Mutation of the two PI 3-kinase docking sites in the PDGF- β receptor did not

interfere with development, but cells derived from the mutants were less chemotactic and lost the ability to contract collagen gels in response to PDGF (Heuchel *et al.*, 1999). Furthermore, injection of a mast cell de-granulating agent in these mice led to a decrease in interstitial fluid pressure, resulting in edema. Thus the signaling mutant revealed a PI 3-kinase-mediated role for the PDGF- β receptor in interstitial fluid homeostasis. Loss of the PI 3-kinase docking site in the Kit receptor induced a gender and tissue-specific defect (Blume-Jensen *et al.*, 2000). Although there were no hematopoietic or pigmentation defects in homozygous mutant mice, males were sterile, due to a block in spermatogenesis. Lastly, knock-in mice expressing signaling mutants of gp130 (a common subunit for the interleukin-6 family of cytokine receptors) were born apparently normal but with immunological defects in the case of SHP2 signal-deficient mice, and were perinatal lethal (as the gp130 null) in the case of the STAT3 signal-deficient mice (Ohtani *et al.*, 2000).

In conclusion, signaling mutants represent a valuable tool to generate a spectrum of alleles which may help to unravel physiological roles for the corresponding receptors during development and in the adult, and may allow dissection of pathways involved in the biological response to the ligand.

Acknowledgements

We thank Bob Milne for revising the manuscript. This work was supported by funds from the Biomed contract BMH4-CT97-2767, MURST Cofin 1997, and Telethon project D.095. C.P.'s laboratory gratefully acknowledges the continuing support of the Compagnia di San Paolo and Fondazione CRT.

References

- ALLEN, R., SHEHAN, S.M., TAYLOR, R.G., KENDAL, T.L. and RICE, R.M. (1995). Hepatocyte growth factor activates quiescent skeletal muscle satellite cells *in vitro*. *J. Cell. Physiol.* 165: 307-312.
- ANASTASI, S., GIORDANO, S., STHANDIER, O., GAMBAROTTA, G., MAIONE, R., COMOGLIO, P. and AMATI, P. (1997). A natural hepatocyte growth factor/scatter factor autocrine loop in myoblast cells and the effect of the constitutive *met* kinase activation on myogenic differentiation. *J. Cell Biol.* 5: 1057-1068.
- BALKOVETZ, D.F. and LIPSCHUTZ, J.H. (1999). Hepatocyte growth factor and the kidney: it is not just for the liver. *Int. Rev. Cytol.* 186: 225-260.
- BARDELLI, A., BASILE, M.L., AUDERO, E., GIORDANO, S., WENNSTROM, S., MENARD, S., COMOGLIO, P.M. and PONZETTO, C. (1999). Concomitant activation of pathways downstream of Grb2 and PI 3-kinase is required for MET-mediated metastasis. *Oncogene* 18: 1139-1146.
- BARDELLI, A., LONGATI, P., GRAMAGLIA, D., STELLA, M.C. and COMOGLIO, P.M. (1997). Gab1 coupling to the HGF/Met receptor multifunctional docking site requires binding of Grb2 and correlates with the transforming potential. *Oncogene* 15: 3103-3111.
- BESSER, D., BARDELLI, A., DIDICHENKO, S., THELEN, M., COMOGLIO, P.M., PONZETTO, C. and NAGAMINE, Y. (1997). Regulation of the urokinase-type plasminogen activator gene by the oncogene *trp-met* involves *grb-2*. *Oncogene* 14: 705-711.
- BIRCHMEIER, C. and GHERARDI, E. (1998). Developmental roles of HGF/SF and its receptor, the c-Met tyrosine kinase. *Trends Cell Biol.* 8: 404-410.
- BISCHOFF, R. (1986). Proliferation of muscle satellite cells on intact myofibers in culture. *Dev. Biol.* 115: 129-139.
- BLADT, F., RIETHMACHER, D., ISENMAN, S., AGUZZI, A. and BIRCHMEIER, C. (1995). Essential role for the c-met receptor in the migration of myogenic precursor cells into the limb bud. *Nature* 376: 768-771.
- BLUME-JENSEN, P., JIANG, G., HYMAN, R., LEE, H-F., O'GORMAN, S. and HUNTER, T. (2000). Kit/stem cell factor receptor-induced activation of phosphatidylinositol 3'kinase is essential for male fertility. *Nat. Genet.* 24: 157-162.

- BOROS, P. and MILLER, C.M. (1995). Hepatocyte growth factor: a multifunctional cytokine. *Lancet* 345: 293-295.
- BOTTARO, D.P., RUBIN, J.S., FALETTA, D.L., CHAN, A.M., KMIECICK, T.E., VANDEWOUDE, G.P. and AARONSON, S.A. (1991). Identification of the hepatocyte growth factor receptor as the c-met proto-oncogene. *Science* 251: 802-804.
- BRAND-SABERI, B., MULLER, T.S., WILTING, J., CHRIST, B. and BIRCHMEIER, C. (1996). Scatter factor/hepatocyte growth factor (SF/HGF) induces emigration of myogenic cells at interlimb level in vivo. *Dev. Biol.* 179: 303-308.
- BUSSOLINO, F., DI RENZO, F., ZICHE, M., BOCCHIETTO, E., OLIVERO, M., NALDINI, L., GAUDINO, G., TAMAGNONE, L., COFFER, A. and COMOGLIO, P.M. (1992). Hepatocyte growth factor is a potent angiogenic factor which stimulates endothelial cell motility and growth. *J. Cell Biol.* 119: 629-641.
- CORNELISON, D.D.W. and WOLD, B.J. (1997). Single-cell analysis of regulating gene expression in quiescent and activating mouse skeletal muscle satellite cells. *Dev. Biol.* 191: 270-283.
- DENETCLAW, W.F., CHRIST, B. and ORDAHL, C.P. (1997). Location and growth of epaxial myotome precursor cells. *Development* 124: 1601-1610.
- DIETRICH, S., ABOU-REBYEH, F., BROHMANN, H., BLADT, F., SONNENBERG-RIETHMACHER, E., YAMAAI, T., LUMSDEN, A., BRAND-SABERI, B. and BIRCHMEIER, C. (1999). The role of SF/HGF and c-Met in the development of skeletal muscle. *Development* 126: 1621-1629.
- DIETRICH, S., SCHUBERT, F.R., HEALY, C., SHARPE, P.T. and LUMSDEN, A. (1998). Specification of the hypaxial musculature. *Development* 125: 2235-2249.
- EBENS, A., BROSE, K., LEONARDO, E.D., HANSON, M.G., BLADT, F., BIRCHMEIER, C., BARRES, B.A. and TESSIER-LAVIGNE, M. (1996). Hepatocyte growth factor/scatter factor is an axonal chemoattractant and a neurotrophic factor for spinal motor neurons. *Neuron* 17: 1157-1172.
- FANTL, W.J., ESCOBEDO, J.A., MARTIN, G.A., TURCK, C.W., DEL ROSARIO, M., MCCORMICK, F. and WILLIAMS, L.T. (1992). Distinct phosphotyrosines on a growth factor receptor bind to specific molecules that mediate different signaling pathways. *Cell* 69: 413-423.
- FIXMAN, E.D., HOLGADO-MADRUGA, M., NGUYEN, L., KAMIKURA, D.M., FOURNIER, T.M., WONG, A.J. and PARK, M. (1997). Efficient cellular transformation by the Met oncoprotein requires a functional Grb2 binding site and correlates with phosphorylation of the Grb2 associated proteins, Cbl and Gab-1. *J. Biol. Chem.* 272: 20167-20172.
- FIXMAN, E.D., NAUJOKAS, M.A., RODRIGUES, G.A., MORAN, M.F. and PARK, M. (1995). Efficient cell transformation by the Tpr-Met oncoprotein is dependent upon tyrosine 489 in the carboxy-terminus. *Oncogene* 10: 237-249.
- FOURNIER, T.M., KAMIKURA, D., TENG, K. and PARK, M. (1996). Branching tubulogenesis but not scatter of madin-darby canine kidney cells requires a functional Grb2 binding site in the Met receptor tyrosine kinase. *J. Biol. Chem.* 271: 22211-22217.
- GAL-LEVI, R., LULVI, Y., AOKI, S., NAKAMURA, T. and HALEVY, O. (1997). Hepatocyte growth factor plays a dual role in regulating skeletal muscle satellite cell proliferation and differentiation. *Biochim. Biophys. Acta* 14254: 1-14.
- GHERARDI, E. and STOKER, M. (1991). Hepatocyte growth factor/scatter factor: mitogen, motogen and met. *Cancer Cells* 3: 227-232.
- GIORDANO, S., BARDELLI, A., ZHEN, Z., MENARD, S., PONZETTO, C. and COMOGLIO, P.M. (1997). A point mutation in the MET oncogene abrogates metastasis without affecting transformation. *Proc. Natl. Acad. Sci. USA* 94: 13868-13872.
- GRANT, D.S., KLEINMAN, H.K., GOLDBERG, I.D., BHARGAVA, M.M., NICKOLOFF, B.J., KINSELLA, J.L., POLVERINI, P. and ROSEN, E.M. (1993). Scatter factor induces blood vessel formation in vivo. *Proc. Natl. Acad. Sci. USA* 90: 1937-1941.
- HEUCHEL, R., BERG, A., TALLQUIST, M., AHLEN, K., REED, R.K., RUBIN, K., CLAESON-WELSH, L., HELDIN, C-H. and SORIANO, P. (1999). Platelet-derived growth factor β receptor regulates interstitial fluid homeostasis through phosphatidylinositol-3' kinase signaling. *Proc. Natl. Acad. Sci. USA* 96: 11410-11415.
- HEYMANN, S., KOUDROVA, M., ARNOLD, H-H., KOSTER, M., and BRAUN, T. (1996). Regulation and function of SF/HGF during migration of limb muscle precursor cell in chicken. *Dev. Biol.* 180: 566-578.
- HOLGADO-MADRUGA, M., EMLET, D.R., MOSCATELLO, D.K., GODWIN, A.K. and WONG, A.J. (1996). A Grb2-associated docking protein in EGF and insulin-receptor signalling. *Nature* 379: 560-564.
- HOLGADO-MADRUGA, M., MOSCATELLO, D.K., EMLET, D.R., DIETERICH, R. and WONG, A.J. (1997). Grb2-associated binder-1 mediates phosphatidylinositol 3-kinase activation and the promotion of cell survival by nerve growth factor. *Proc. Natl. Acad. Sci. USA* 94: 12419-12424.
- HONDA, S., KAGOSCIMA, M., WANAKA, A., TOHYAMA, M., MATSUMOTO, K. and NAKAMURA, T. (1995). Localisation and functional coupling of HGF and c-met/HGF receptor in rat brain: implication as neurotrophic factor. *Brain Res. Mol.* 32: 197-210.
- ITOH, M., YOSHIDA, Y., NISHIDA, K., NARIMATSU, M., HIBI, M. and HIRANO, T. (2000). A role of Gab1 for heart, placenta, and skin development and growth factors and cytokines-induced ERK MAP kinase activation. *Mol. Cell. Biol.* In press.
- IWAMA, A., YAMAGUCHI, N. and SUDA, T. (1996). STK/RON receptor tyrosine kinase mediates both apoptotic and growth signals via the multifunctional docking site conserved among the HGF receptor family. *EMBO J.* 15: 5866-5875.
- JEFFERS, M., RONG, S. and WOUDE, G.F. (1996). Hepatocyte growth factor/scatter factor-Met signaling in tumorigenicity and invasion/metastasis. *J. Mol. Med.* 74: 505-513.
- JENNISCHE, E., EKBERG, S. and MATEJKA, G.L. (1993). Expression of hepatocyte growth factor in growing and regenerating rat skeletal muscle. *Am. J. Physiol. Cell Physiol.* 265: 122-128.
- KELLY, R., G., ZAMMIT, P.S., SCHNEIDER, A., ALONSO, S., BIBEN, C. and BUCKINGHAM, M.E. (1997). Embryonic and foetal myogenic programmes act through separate enhancer at the MLC1F/3F locus. *Dev. Biol.* 187: 183-199.
- MAINA, F. and KLEIN, R. (1999). Hepatocyte growth factor a versatile signal for developing neurons. *Nat. Neurosci.* 2: 213-217.
- MAINA, F., CASAGRANDA, F., AUDERO, E., SIMEONE, A., COMOGLIO, P.M., KLEIN, R. and PONZETTO, C. (1996). Uncoupling of Grb2 from the Met receptor in vivo reveals complex roles in muscle development. *Cell* 87: 531-542.
- MAINA, F., HILTON, M.C., ANDREAS, R., WYATT, S., KLEIN, R. and DAVIES, A.M. (1998). Multiple role hepatocyte growth factor in sympathetic neuron development. *Neuron* 20: 835-846.
- MAINA, F., HILTON, M.C., PONZETTO, C., DAVIES, A.M. and KLEIN, R. (1997). Met receptor signalling is required for sensory nerve development in vivo, and hepatocyte growth factor promotes axonal growth and survival of sensory neurons in vitro. *Genes Dev.* 11: 3341-3350.
- MAROUN, C.R., HOLGADO MADRUGA, M., ROYAL, I., NAUJOKAS, M.A., FOURNIER, T.M., WONG, A.J. and PARK, M. (1999). The Gab1 PH domain is required for localization of Gab1 at sites of cell-cell contact and epithelial morphogenesis downstream from the met receptor tyrosine kinase. *Mol. Cell. Biol.* 19: 1784-1799.
- MATSUMOTO, K. and NAKAMURA, T. (1996). Emerging multipotent aspect of hepatocyte growth factor. *J. Biochem.* 119: 591-600.
- MATSUMOTO, K. and NAKAMURA, T. (1997). HGF: its organotrophic role and therapeutic potential. *Ciba F. Symp.* 212: 198-211.
- MICHALOPOULOUS, G.K. and DEFANCES, M.C. (1997). Liver regeneration. *Science* 276: 60-66.
- MILLER, K.J., THALLOOR, D., MATTESON, S. and PAVLATH, G.K. (2000). Hepatocyte growth factor affects satellite cell activation and differentiation in regenerating skeletal muscle. *Am. J. Physiol. Cell Physiol.* 278: 174-181.
- MINICHELLO, L., CASAGRANDA, F., SOLER TATCHE, R., STUCKY, C.L., POSTIGO, A., LEWIN, G.R., DAVIS, A.M. and KLEIN, R. (1998). Point mutation in *trkB* causes loss of NT4-dependent neurons without major effects on diverse BDNF responses. *Neuron* 21: 335-345.
- NALDINI, L., WEIDNER, K.M., VIGNA, E., GAUDINO, G., BARDELLI, A., PONZETTO, C., NARSIMHAN, R.P., HARTMAN, G., ZARNEGAR, R., MICHALOPOULOS, G.K., BIRCHMEIER, W. and COMOGLIO, P.M. (1991). Scatter factor and hepatocyte growth factor are indistinguishable ligands for the met receptor. *EMBO J.* 10: 2867-2878.
- OHTANI, T., ISHIHARA, K., ATSUMI, T., NISHIDA, K., KANEKO, Y., MIYATA, T., ITOH, S., NARIMATSU, M., MAEDA, H., FUKADA, T., ITOH, M., OKANO, H., HIBI, M. and HIRANO, T. (2000). Dissection of signaling cascades through gp 130 in vivo: reciprocal roles for STAT3 and SHP2-mediated signals in immune responses. *Immunity* 12: 95-105.
- PARK, C.Y. and HAYMAN, J.H. (1999). The tyrosine in the bidentate motif of the env-sea oncoprotein are essential for cell transformation and are binding sites for Grb2

- and the tyrosine phosphatase SHP-2. *J. Biol. Chem.* 274: 7583-7590.
- PARTANEN, J., SCHWARTZ, L. and ROSSANT, J. (1998). Opposite phenotypes of hypomorphic and Y766 phosphorylation site mutations reveal a function for *Fgfr1* in antero-posterior patterning of mouse embryos. *Genes Dev.* 12: 2332-2334.
- PAWSON, T. and SCOTT, J.D. (1997). Signaling through scaffold, anchoring and adaptor proteins. *Science* 278: 2075-2078.
- PONZETTO, C. (1998). Physiological function of receptor-SH2 interactions. *Current Topics in Microbiology and Immunology* 228: 165-177.
- PONZETTO, C., BARDELLI, A., MAINA, F., LONGATI, P., PANAYOTOU, G., DHAND, R., WATERFIELD, M.D. and COMOGLIO, P.M. (1993). A novel recognition motif for phosphatidylinositol 3-kinase binding mediates its association with the hepatocyte growth factor/scatter factor receptor. *Mol. Cell. Biol.* 13: 4600-4608.
- PONZETTO, C., BARDELLI, A., ZHEN, Z., MAINA, F., DELLAZONCA, P., GIORDANO, S., GRAZIANI, A., PANAYOTOU, G. and COMOGLIO, P.M. (1994). A multifunctional docking site mediates signalling and transformation by the hepatocyte growth factor/scatter factor receptor family. *Cell* 77: 261-271.
- PONZETTO, C., ZHEN, Z., AUDERO, E., MAINA, F., BARDELLI, A., BASILE, M.L., GIORDANO, S., NARSIMHAN, R. and COMOGLIO, P. (1996). Specific uncoupling of GRB2 from the Met receptor. Differential effects on transformation and motility. *J. Biol. Chem.* 271: 14119-14123.
- SCAAL, M., BONAFEDE, A., DATHE, V., SACHS, M., CANN, G., CHRIST, B. and BRAND-SABERI, B. (1999). SF/HGF is a mediator between limb patterning and muscle development. *Development* 126: 4885-4893.
- SCHMIDT, C., BLADT, F., GOEDECKE, S., BRINKMANN, V., ZSCHLESCHKE, W., SHARPE, M., GHERARDI, E. and BIRCHMEIER, C. (1995). Scatter factor-hepatocyte growth factor is essential for liver development. *Nature* 373: 699-702.
- SCHMIDT, L., DUH, F.M., CHEN, F., KISHIDA, T., GLENN, G., CHOYKE, P., SCHERER, S.W., ZHUANG, Z., LUBENSKY, I., DEAN, M., ALLILMETS, R., CHIDAMBARAM, A., BERGERHEIM, U.R., FELTIS, J.T., CASADE-VALL, C., ZAMARRON, A., BERNUES, M., RICHARD, S., LIPS, C.J.M., WALTER, M.M., TSUI, L.C., GEIL, L., ORCUTT, M.L., STACKHOUSE, T., LIPAN, J., SLIFE, L., BRAUCH, H., DECKER, J., NIEHANS, G., HUGHSON, M.D., MOCH, H., STORKEL, S., LERMAN, M.I., LINEHAN, W.M. and ZBAR, B. (1997). Germline and somatic mutations in the tyrosine kinase domain of the *MET* proto-oncogene in papillary renal carcinomas. *Nat. Genet.* 16: 68-73.
- SCHMIDT, L., JUNKER, K., NAKAIGAWA, N., KINJERSKI, T., WEIRICH, G., MILLER, M., LUBENSKI, I., NEUMANN, H.P.H., BRAUCH, H., DECKER, J., VOCKE, C., BROWN, J.A., JENKINS, R., RICHARD, S., BERGERHEIM, U., GERRARD, B., DEAN, M., MARSTON LINEHAN, W. and ZBAR, B. (1999). Novel mutations of the *MET* proto-oncogene in papillary renal carcinomas. *Oncogene* 18: 2343-2350.
- SCHWENK, F., BARON, U. and RAJEWSKY, K. (1995). A *cre*-transgenic mouse strain for the ubiquitous deletion of *loxP*-flanked gene segments including deletion in germ cells. *Nucleic. Acids. Res.* 23: 5080-5081.
- SONGYANG, Z., SHOELSON, S.E., CHAUDHURI, M., GISH, G., PAWSON, T., HASER, W.G., KING, F., ROBERTS, T., RATNOFSKY, S., LECHLEIDER, R.J., NEEL, B.G., BIRGE, R.B., FAJAEDO, J.E., CHOU, M.M., HANAFUSA, H., SCHAFFHAUSEN, B. and CANTLEY, L.C. (1993). SH2 domains recognize specific phosphopeptide sequences. *Cell* 72: 767-778.
- SONNENBERG, E., MEYER, D., WEIDNER, K.M. and BIRCHMEIER, C. (1993a). Scatter factor-hepatocyte growth factor and its receptor, the c-met tyrosine kinase, can mediate a signal exchange between mesenchyme and epithelia during mouse development. *J. Cell. Biol.* 123: 223-235.
- SONNENBERG, E., WEIDNER, K.M., and BIRCHMEIER, C. (1993b). Expression of the met-receptor and its ligand, HGF-SF during mouse embryogenesis. In *Hepatocyte Growth Factor-Scatter Factor-and the C-Met Receptor* (Eds. I.D. Goldberg and E.M. Rosen). Birkhauser Verlag Basel, Switzerland, pp. 381-394.
- TAKAHASHI-TEZUKA, M., YOSHIDA, Y., FUKADA, T., OHTANI, T., YAMANAKA, Y., NISHIDA, K., NAKAJIMA, K., HIBI, M. and HIRANO, T. (1998). Gab1 acts as an adapter molecule linking the cytokine receptor gp130 to ERK mitogen-activated protein kinase. *Mol. Cell. Biol.* 18: 4109-4117.
- TAKAYAMA, H., LAROCHELLE, W.J., ANVER, M., BOCKMAN, D.E. and MERLINO, G. (1996). Scatter factor/Hepatocyte growth factor as a regulator of skeletal muscle and neural crest development. *Proc. Natl. Acad. Sci. USA* 93: 5866-5871.
- TAKEBAYASHI, T., IYAMORO, M., JIKKO, A., MATSUMURA, T., ENOMOTO-IWAMOTO, M., MYOUKAI, F., KOYAMA, E., YAMAAI, T., MATSUMOTO, K., NAKAMURA, T., KURISU, K. and NOJI, S. (1995). Hepatocyte growth factor scatter factor modulates cell motility, proliferation, and proteoglycan synthesis of chondrocytes. *J. Cell. Biol.* 129: 1411-1419.
- TATSUMI, R., ANDERSON, J.E., NEVORET, C.J., HALEVY, O. and ALLEN, R.E. (1998). HGF/SF is present in normal adult skeletal muscle and is capable of activating satellite cells. *Dev. Biol.* 194: 114-128.
- UEHARA, Y., MINOWA, O., MORI, C., SHIOTA, K., KUNO, J., NODA, T. and KITAMURA, N. (1995). Placental defect and embryonic lethality in mice lacking hepatocyte growth factor/scatter factor. *Nature* 373: 702-705.
- WEIDNER, K., DICESARE, M., SACHS, V., BRINKMANN, J., BEHRENS, W. and BIRCHMEIER, W. (1996). Interaction between Gab1 and the c-Met receptor tyrosine kinase is responsible for epithelial morphogenesis. *Nature* 384: 173-176.
- WEIDNER, K.M., SACHS, M., RIETHMACHER, D. and BIRCHMEIER, W. (1995). Mutation of juxtamembrane tyrosine residue 1001 suppresses loss-of-function mutations of the met receptor in epithelial cells. *Proc. Natl. Acad. Sci. USA* 92: 2597-2601.
- WONG, V., GLASS, D.J., ARRIAGA, R., YANCOPOULOS, D.G., LINDSAY, R.M. and CONN, G. (1997). Hepatocyte growth factor promotes motor neuron survival and synergizes with ciliary neurotrophic factor. *J. Biol. Chem.* 272: 5187-5191.
- YAMAMOTO, Y., LIVET, J., POLLOK, R.A., GARCES, A., ARCE, V., DELAPEYRIÈRE, O. and HENDERSON, C.E. (1997). Hepatocyte growth factor (HGF/SF) is a muscle-derived survival factor for a subpopulation of embryonic motoneurons. *Development* 124: 2903-2913.
- YANG, X.M., VOGAN, K., GROS, P. and PARK, M., (1996). Expression of the met receptor tyrosine kinase in muscle progenitor cells in somites and limbs is absent in *Splotch* mice. *Development* 122: 2163-2171.
- YANG, Y.M., SPITZER, E., MEYER, D., SACHS, M., NIEMANN, C., HARTMANN, G., WEIDNER, K.M., BIRCHMEIER, W. and BIRCHMEIER, C. (1995). Sequential requirement of hepatocyte growth factor and neuregulin in the morphogenesis and differentiation of the mammary gland. *J. Cell. Biol.* 131: 215-226.
- ZARNEGAR, R. and MICHALOPOULOS, G.K. (1995). The many faces of hepatocyte growth factor: from hepatopoiesis to hematopoiesis. *J. Cell. Biol.* 129: 1177-1180.
- ZHANG, J.M., WEI, Q., ZHAO, X. and PATERSON, B.M. (1999). Coupling of the cell cycle and myogenesis through the cyclin D1-dependent interaction of MyoD with cdk4. *EMBO J.* 18: 926-933.
- ZHANG, J.M., ZHAO, X., WEI, Q. and PATERSON, B.M. (1999). Direct inhibition of G(1) cdk kinase activity by MyoD promotes myoblast cell cycle withdrawal and terminal differentiation. *EMBO J.* 18: 6983-6993.
- ZHU, H., NAUJOKAS, M.A., FIXMAN, E.D., TOROSSIAN, K. and PARK, M. (1994). Tyrosine 1356 in the carboxyl-terminal tail of the HGF/SF receptor is essential for the transduction of signals for cell motility and morphogenesis. *J. Biol. Chem.* 269: 29943-29948.